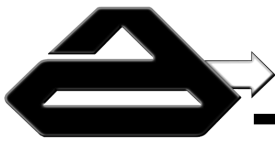


R.P. ADAMS INDUSTRIAL MANUAL STRAINERS



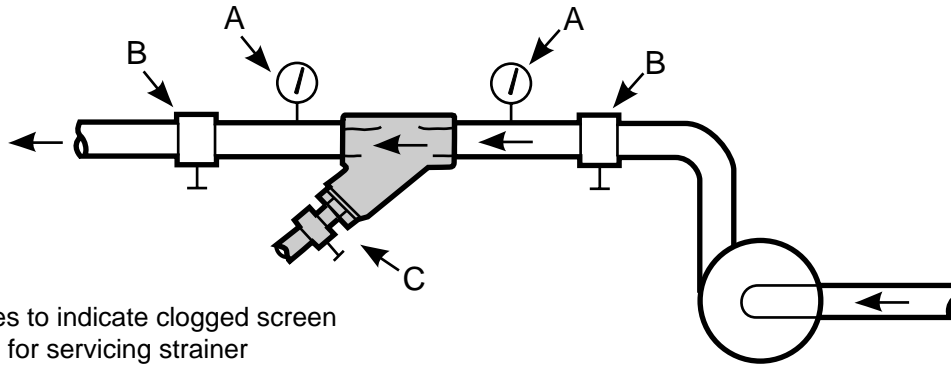


Y Type Strainers	
Pressure Drop Tables	2
Threaded 250 lb. Cast Iron; 50 lb., 300 lb. Bronze	3
600 lb. Carbon & Stainless Steel	4
1500 lb. Carbon & Stainless Steel	5
Flanged 125/250 lb. A.N.S.I. Cast Iron	6
150 lb. A.N.S.I. Carbon & Stainless Steel; Bronze	7
300 lb. A.N.S.I. Carbon & Stainless Steel	8
600 lb. A.N.S.I. Carbon & Stainless Steel	9
Basket Strainers	
Pressure Drop Tables	10
Threaded 125 lb. Cast Iron	11
150 lb. Carbon & Stainless Steel	12
Flanged 125 lb. A.N.S.I. Cast Iron	13
150 lb. A.N.S.I. Carbon & Stainless Steel; Bronze	14
Perforated Metal & Mesh	15
Duplex Strainers	
1" - 30" Cast Iron; Carbon & Stainless Steel; Bronze	16 - 20
Dual Basket Strainers	21 - 22
Basket Strainers Fabricated	23
Custom Fabricated "Y" Strainers	24
"Tee" Strainers	25
Limited Warranty	26
Application Questionnaire	27



Y Strainers

“Y” Strainers take their name from their configuration. They are most commonly used in pressurized lines, gas or liquid, but can also be used in suction or vacuum conditions. They are intended for applications where small amounts of solid particulate are expected, and where clean-out will be infrequent. If solids will flush easily from the screen, and fluid can be exhausted to atmosphere, a blow-down valve on the drain port will allow clean-out without removal of the screen, and without interrupting the process flow.

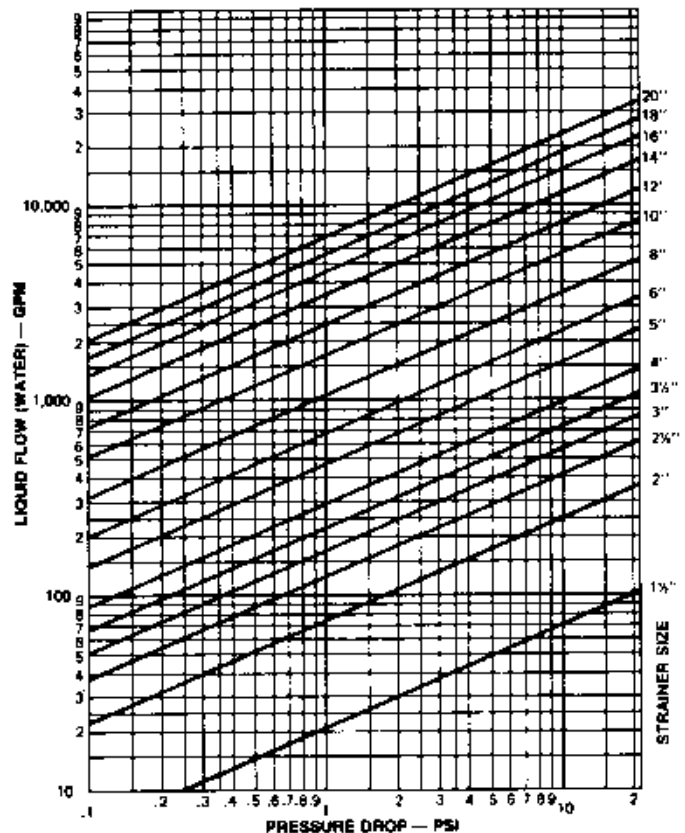
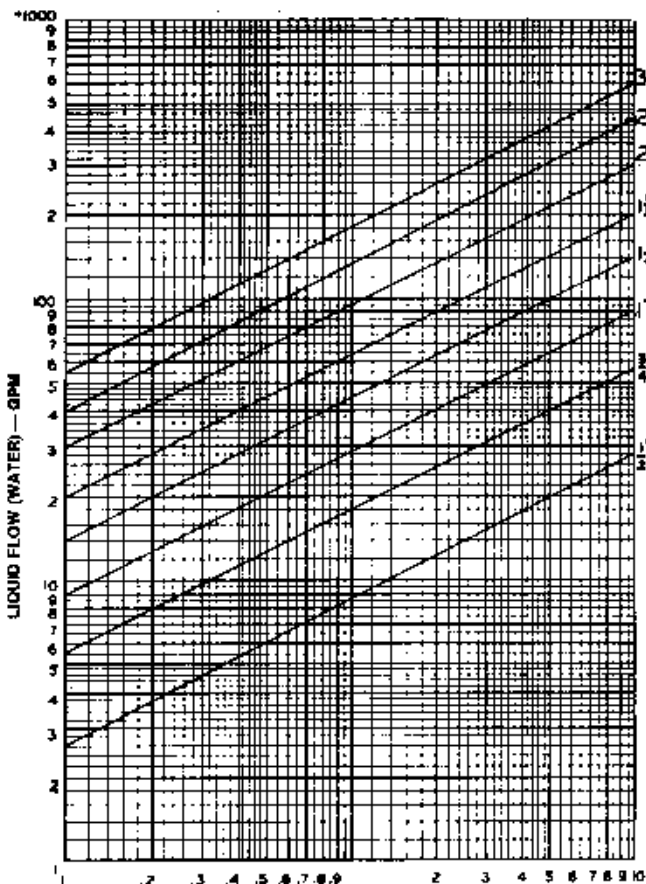


- A. Pressure gauges to indicate clogged screen
- B. Isolation valves for servicing strainer
- C. Optional manual or auto blow-down

Flow Rate vs Pressure Drop

Y-Type Strainers - Screwed

Y-Type Strainers - Flanged





Y Strainers

Cast Iron & Cast Bronze, NPT Threaded, Sweat End

Types T250G Cast Iron & TB150 & TB300 Bronze, TB150SW



Features

S.F. threaded strainers in Cast Iron and Cast Bronze feature a machined, tapered seat which ensures a perfect fit for the removable, stainless steel screen. All sizes come complete with N.P.T. blow-off with plug, which can be replaced with a ball valve for on-line blow-down of particulate. See page 5 for high pressure Y Strainers.

Construction

Cast Iron - Body, cover, plug - High Tensile ASTM A126 Class B Cast Iron

Cast Bronze - Body, cover, plug - ASTM B62 Bronze

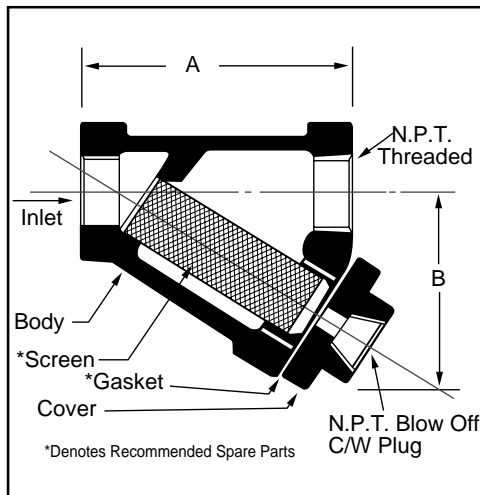
All screens are Stainless Steel

Operating Pressures and Temperatures

Type	Size	PSI @ Temp Steam		PSI @ Temp W.O.G.	
T250G	1/4" - 3"	250	400°F	400	150°F
TB150	1/4" - 3"	150	400°F	300	150°F
TB300	1/2" - 3"	300	400°F	400	150°F

Standard Screens

Size	Std.	Opening
1/4" - 3"	20 mesh	0.032"



Dimensional Data

Size		A				B				Blow-Off NPT				Shipping Weight (lbs)	
Inches	Prefix	TB150	TB150SW	T250G	TB300	TB150	TB150SW	T250G	TB300	TB150	TB150SW	T250G	TB300	TB150 & T250G	TB300
1/4	0025	3 7/32	3 11/12	2 5/8		2 5/32	2 3/8	2		3/8	3/8	1/4		2	
3/8	0038	3 7/32	3 11/12	2 5/8		2 5/32	2 3/8	2		3/8	3/8	1/4		2	
1/2	0050	3 7/32	3 11/12	3 1/14	3	2 5/32	2 3/8	2 1/4	2 5/16	3/8	3/8	1/4	3/8	2 1/2	2 1/2
3/4	0075	3 15/16	4 11/32	3 3/4	3 7/16	2 3/4	2 3/4	2 5/8	2 1/2	3/8	3/8	1/2	3/8	3	3
1	0100	4 17/32	5	4	4 1/16	2 15/16	3 3/16	2 3/4	3 1/8	1/2	1/2	1/2	3/4	5	6
1 1/4	0125	5 11/32	5 29/32	5	4 7/8	3 9/16	3 23/32	3 3/4	3 5/8	1/2	1/2	3/4	3/4	9	9
1 1/2	0150	6 7/32	6 29/32	5 13/16	5 3/4	3 27/32	4 1/8	4	4 1/8	1/2	1/2	3/4	3/4	10	11
2	0200	7 1/2	8 21/32	7	6 3/4	5 7/16	5 3/16	5	5	1/2	1/2	1	3/4	16	19
2 1/2	0250	9 1/16		9 5/16	7 1/2	5 29/32		6	5 1/4	1/2		1 1/2	1 1/4	29	29
3	0300	10 7/32		10 1/8	8 1/2	6 9/32		7	6 1/2	1/2		1 1/2	1 1/4	38	42

Ordering Information

Example: Include full description

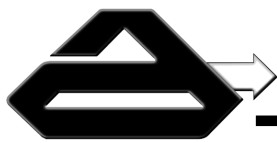
Size (Prefix) Model Number *Screen Opening

0150 - T250G - 032

1 1/2" NPT, Y Strainer, Cast Iron, 20 Mesh Screen

Notes

Manufacturer reserves the right to modify dimensions, materials, or design. Contact factory for certification.



Y Strainers

Cast Steel & Cast 316SS, NPT Threaded

Types T600, YT6 Cast Steel and T600SS, YT6SS Cast 316SS
(or Socket Weld Ends "SW")



Features

Threaded strainers in Cast Steel and Cast Stainless Steel are rated for up to 1480 psi for Water, Oil or Gas. A machined, tapered seat ensures a perfect fit for the removable, stainless steel screen. All sizes come complete with blow-off with plug, which can be replaced with a ball valve for on-line blow-down of particulate.

Construction

Cast Steel - Body, cover, plug - Carbon steel ASTM SPEC A216 Grade WCB
Stainless Steel - Body, cover, plug, - ASTM SPEC A351 Grade CF8M

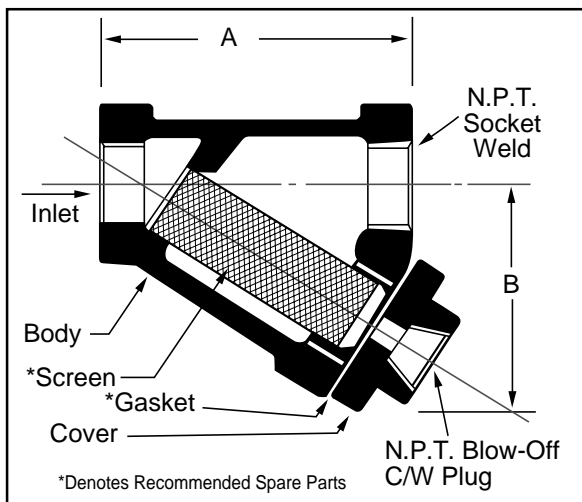
All screens are Stainless Steel

Operating Pressures and Temperatures

Type	Size	PSI @ Temp Steam		PSI @ Temp W.O.G.	
T600 - T600SS	1/2" - 3"	600	450°F	1480	100°F
YT6 - YT6SS	1/2" - 3"	600	450°F	1480	100°F

Standard Screens

Size	Std.	Opening
1/2" - 3"	20 Mesh	0.032"



Dimensional Data

Size		A		B		Blow-Off NPT T600	Blow-Off NPT YT6 YT6SS	Shipping Weight lbs.
Inches	Prefix	T600 T600SS	YT6 YT6SS	T600 T600SS	YT6 YT6SS			
1/2	0050	3	3 1/4	1 7/8	2 3/16	3/8	1/4	4
3/4	0075	3 7/16	3 5/8	2 3/16	2 3/4	3/8	1/4	5
1	0100	4 1/16	4 1/4	2 17/32	3 3/16	1/2	1/2	6
1 1/4	0125	4 23/32	5 1/4	3 1/32	3 7/8	1/2	1/2	8
1 1/2	0150	5 5/16	6 1/4	3 17/32	4 3/4	3/4	1/2	10
2	0200	6 5/16	7 5/8	4 1/4	6	3/4	1/2	18
2 1/2	0250	7 7/8	8 3/8	5 5/16	7	1 1/4	3/4	25
3	0300	8 7/8	9 1/2	5 29/32	8 1/2	1 1/4	3/4	30

Ordering Information

Example: Include full description

Size (Prefix) Model Number *Screen Opening

0150 - T600SS - 032

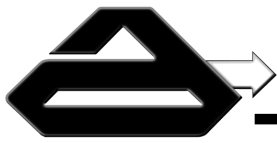
1 1/2"NPT, Y Strainer, 316SS, 20 Mesh Screen

Notes

For higher temperature service other gasket materials are available upon request.

Manufacturer reserves the right to modify dimensions, materials, or design. Contact factory for certification.

For socket weld add suffix "SW" to model number.



Y Strainers

High Pressure, NPT Threaded

Type T1500 Cast Steel & Stainless Steel (or Socket Weld Ends "SW")



Features

The spiral wound, welded stainless steel construction of the screen provides high strength, preventing screen collapse. Continuous slot openings reduce bridging of particles; undersized solids pass freely through the "V" shaped slots without clogging.

Construction

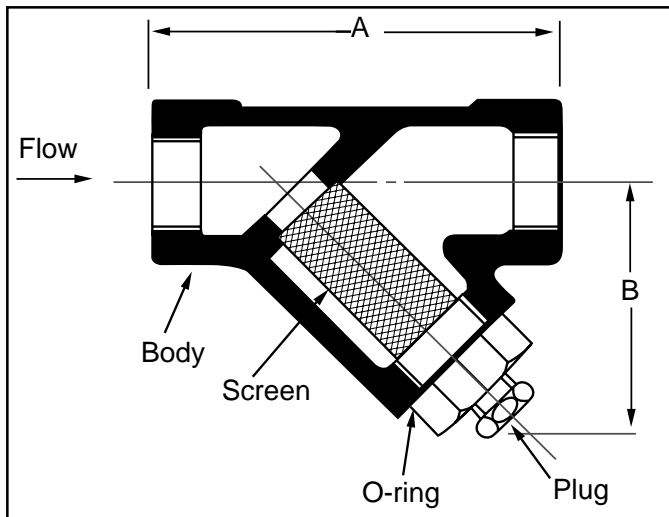
The high strength, cast chrome-moly body and o-ring seal are designed for higher pressure applications. If all stainless steel construction is needed, add "SS" to the series number shown below after the screen mesh designation.

Operating Pressures and Temperatures

Plug & Cap	O-Ring	Screen	Body	Max Temp	Max PSI WOG
CS	Viton	304 SS	ASTM-A487-4N	250	3000
316 SS	Viton	304 SS	CF8M	450	3000

Standard Screens

Size	Std.	Opening
1/2" - 2"	Slotted Screen	0.032"



Dimensional Data

Size		A	B	Blow-Off NPT	Shipping Weight (lbs)
Inches	Prefix				
1/2	0050	5 1/8	4 3/4	1/4	10
3/4	0075	5 1/8	4 3/4	1/4	10
1	0100	5 1/8	4 3/4	1/4	10
1 1/2	0150	7 1/2	7	3/4	25
2	0200	9 5/8	8 3/8	3/4	40

Ordering Information

Example: Include full description

Size (Prefix) Model Number *Screen Opening

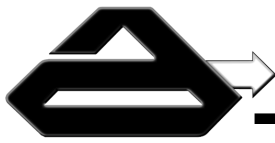
0150 - T1500SS - 032

1 1/2" NPT, High Pressure Y Strainer, Cast Stainless Steel, 0.032" Slotted Screen

Notes

Manufacturer reserves the right to modify dimensions, materials, or design. Contact factory for certification.

For socket weld add suffix "SW" to model number.



Y Strainers

Cast Iron, Flanged

Type YFC125 & YFC250 Cast Iron with A.N.S.I. Flanges



Features

S.F. Cast Iron Flanged Strainers feature a machined, tapered seat which ensures a perfect fit for the removable, stainless steel screen. All sizes come complete with flanged blow-off cover, gasket & plug. May be installed in vertical or horizontal pipelines with blow-off connection at the lower end of the screen.

Construction

Body, cover, plug - High Tensile ASTM A126 Class B Cast Iron
All screens are Stainless Steel

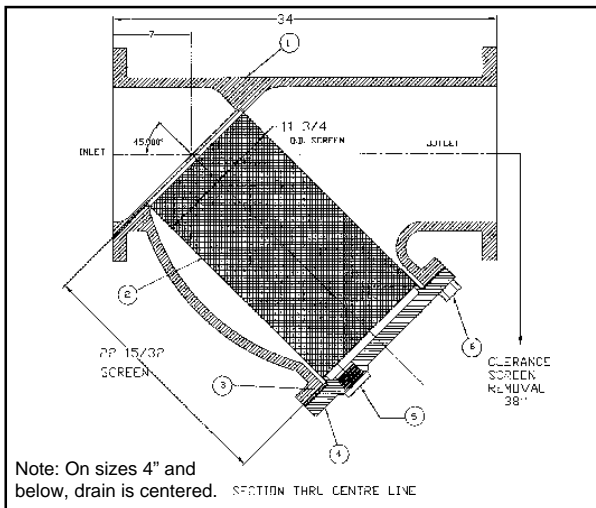
Operating Pressures and Temperatures

Type	Size	PSI @ Temp Steam	PSI @ Temp W.O.G.
YFC125	2" - 12"	125 350°F	150 150°F
	14" - 24"	125 250°F	150 150°F
YFC250	2" - 12"	250 400°F	400 150°F
	14" - 24"	250 250°F	300 150°F

Standard Screens

Size	Std.	Opening
2" - 3"	3/64" perf	0.045"
4" - 24"	1/8" perf	0.125"

Dimensional Data



Size		A		B		Blow-Off NPT		Shipping Weight (lbs)	
Inches	Prefix	YFC125	YFC250	YFC125	YFC250	YFC125	YFC250	YFC125	YFC250
2	0200	9 7/8	11 5/8	6 1/4	6 1/2	1 1/2	1/2	36	40
2 1/2	0250	11 1/4	11 1/16	7 5/8	7	1	1	48	52
3	0300	12 1/2	12 5/8	8 1/4	8	1 1/4	1	86	86
4	0400	14 7/8	15 1/2	10 1/8	10 3/4	1 1/4	1 1/4	106	160
5	0500	17 15/16	19 1/4	12 1/2	13 1/2	1 1/2	1 1/4	156	210
6	0600	18 3/4	20 1/4	13	16 1/4	1 1/2	1 1/2	201	401
8	0800	23	22	13 7/8	19 1/2	2	1 1/2	321	620
10	1000	28	27 7/8	17 1/8	21 1/4	2	2	370	710
12	1200	34	32 5/8	20 1/2	25	2	2	621	1120
14	1400	37 3/8	37 5/8	29	29 1/2	2	2	1084	1300
16	1600	42 1/2	38 5/8	33	33 1/2	2	2	1615	2200
18	1800	46 1/8	47 5/8	35 1/2	36 1/2	2	2 1/2	2600	2800
20	2000	54 1/2		36 3/4		2			
24	2400	55 3/4		40 1/4		2			

Ordering Information

Example: Include full description

0400 - YFC125 - 125
4" FLGD, Y Strainer, Cast Iron, 125#
A.N.S.I., Flanges with 1/8" Perf Screen

Notes

Manufacturer reserves the right to modify dimensions, materials, or design. Contact factory for certification.



Y Strainers

Cast Bronze, Carbon Steel, Cast 316SS, 150# Flanged

Type YF150B Cast Bronze, YFC150 Cast Steel, YF150SS Cast Stainless Steel



Features

S.F. 150# A.N.S.I. Flanged strainers are available in Carbon Steel, Stainless Steel and Bronze. A machined, tapered seat ensures a perfect fit for the removable, stainless steel screen. 2" and larger come complete with flanged blow-off cover, gasket & plug. 1 1/2" and smaller come complete with solid threaded cover and gasket. May be installed in vertical or horizontal pipelines with blow-off connection at the lower end of the screen.

Construction

Carbon Steel - Body & Cover, ASTM SPEC A216, Grade WCB
Stainless Steel - Body & Cover, ASTM SPEC A351, Grade CF8M
Bronze - Body & Cover, ASTM SPEC B62-Bronze

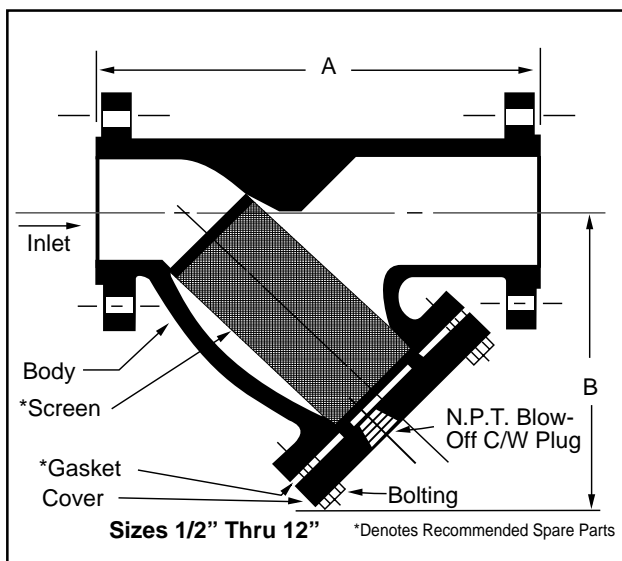
All screens are Stainless Steel

Operating Pressures and Temperatures

Type	Size	PSI @ Temp Steam		PSI @ Temp W.O.G.	
YF150B	1/2" - 12"	150	450°F	225	100°F
YFC150	1/2" - 12"	150	567°F	285	100°F
YF150SS	1/2" - 12"	150	567°F	285	100°F

Standard Screens

Size	Std.	Opening
1/2" - 1 1/2"	1/32 perf	0.031"
2" - 3"	3/64" perf	0.045"
4" - 12"	1/8" perf	0.125"



Dimensional Data

Size		A	B	Blow-Off NPT	Shipping Weight (lbs)
Inches	Prefix				
1/2	0050	6	2 9/16	Opt.	9
3/4	0075	7 1/2	3	Opt.	11
1	0100	7 3/8	3 3/8	Opt.	15
1 1/2	0150	7 1/4	4 3/4	Opt.	18
2	0200	8 5/8	4 7/8	1/2	30
2 1/2	0250	10 1/4	7 1/2	3/4	44
3	0300	11 5/8	7 3/4	1	60
4	0400	14 3/8	9 1/8	1 1/2	96
5	0500	17 5/8	11	2	150
6	0600	18 5/8	13 3/8	2	174
8	0800	24 3/8	14 5/8	2	264
10	1000	26	17 1/4	2	414
12	1200	30 3/8	21	2	615

Ordering Information

Example: Include full description

Size Model *Screen
(Prefix) Number Opening

0400 - YF150SS - 125

4" FLGD, Y Strainer, Cast Stainless Steel,
150# A.N.S.I., Flanges with 1/8" Perf Screen

Notes

Manufacturer reserves the right to modify dimensions, materials, or design. Contact factory for certification.



Y Strainers

Cast Steel & Cast 316SS, Flanged

Type YF300 Cast Steel, YF300SS Cast Stainless Steel, with 300# A.N.S.I. Flanges



Features

S.F. 300# A.N.S.I. Flanged strainers are available in Carbon Steel and Stainless Steel. A machined, tapered seat ensures a perfect fit for the removable, stainless steel screen. 2" and larger come complete with flanged blow-off cover, gasket & plug. 1 1/2" and smaller come complete with solid threaded cover and gasket. May be installed in vertical or horizontal pipe lines with blow-off connection at the lower end of the screen.

Construction

Carbon Steel - Body & Cover, ASTM SPEC A216, Grade WCB
Stainless Steel - Body & Cover, ASTM SPEC A351, Grade CF8M

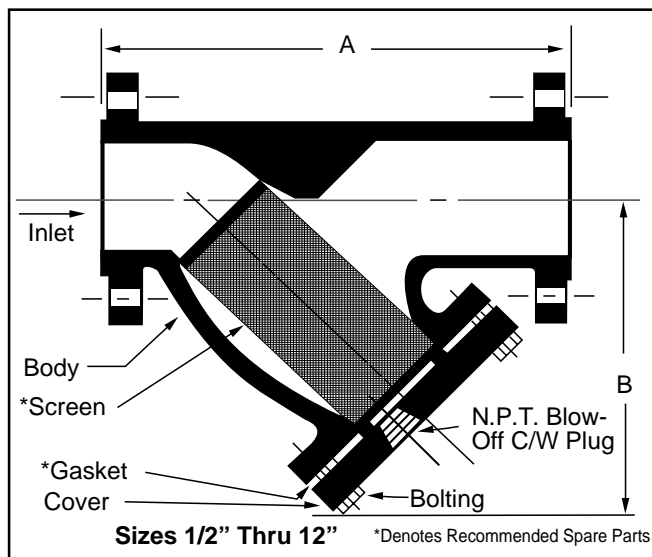
All screens are Stainless Steel

Operating Pressures and Temperatures

Type	Size	PSI @ Temp Steam	PSI @ Temp W.O.G.
YF300	1" - 12"	300 838°F	720 100°F
YF300SS	1" - 12"	300 1125°F	720 100°F

Standard Screens

Size	Std.	Opening
1" - 3"	3/64" perf	0.045"
4" - 12"	1/8" perf	0.125"



Dimensional Data

Size		A	B	Blow-Off NPT	Shipping Weight (lbs)
Inches	Prefix				
1	0100H	7 13/16	3 5/8		24
1 1/2	0150	7 9/16	4 3/8		27
2	0200	9	6 1/8	1/2	47
2	0200H	9 3/4	6 1/8	1	50
2 1/2	0250	10 11/16	7 7/16	1	64
3	0300	12 9/16	9	1 1/4	87
3	0300H	13 1/2	7 3/4	1 1/4	94
4	0400	14 5/8	11	1 1/2	165
4	0400H	16 5/8	10 3/4	1 1/2	170
5	0500	18 1/2	15 3/8	2	186
6	0600	19 3/4	15 1/2	2	260
8	0800	25	16 1/4	2	385
10	1000	27 1/2	19 1/4	2	610
12	1200	33 3/4	24	2	1300

Ordering Information

Example: Include full description

Size (Prefix)	Model Number	*Screen Opening
------------------	-----------------	--------------------

0400 - YF300SS - 125

4" FLGD, Y Strainer, Cast Stainless Steel,
 300# A.N.S.I., Flanges with 1/8" Perf Screen

Notes

Manufacturer reserves the right to modify dimensions, materials, or design. Contact factory for certification.

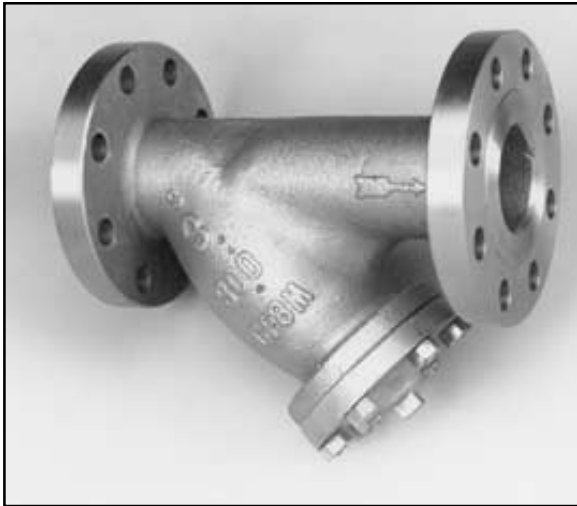
"H" denotes dimensions similar to Hayward.



Y Strainers

Cast Steel & Cast 316SS, Flanged

Type YF600 Cast Steel & YF600SS Cast Stainless Steel, with 600# A.N.S.I. Flanges



Features

S.F. 600# A.N.S.I. Flanged strainers are available in Carbon Steel and Stainless Steel. They provide very economical protection for Water, Oil or Gas service up to 1235 psig for stainless, and 1480 psig for carbon steel. A machined, tapered seat ensures a perfect fit for the removable, stainless steel screen. May be installed in vertical or horizontal pipelines with blow-off connection at the lower end of the screen.

Construction

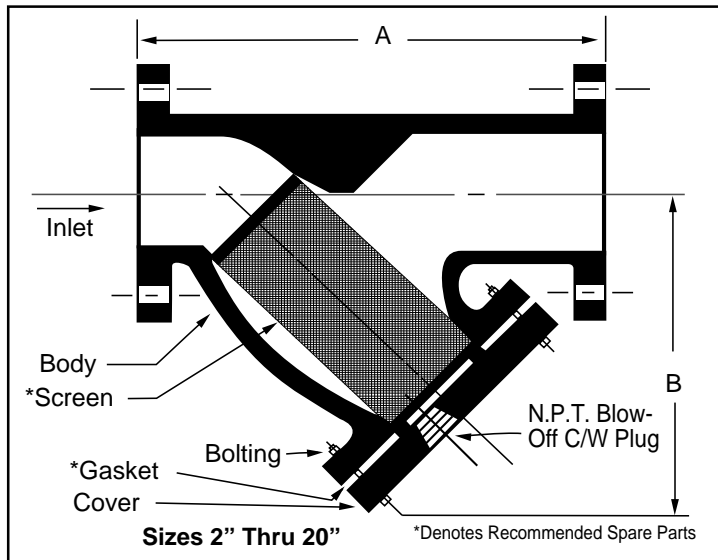
Carbon Steel - Body & Cover, ASTM SPEC A216, Grade WCB
Stainless Steel - Body & Cover, ASTM SPEC A351, Grade CF8M
 All screens are Stainless Steel

Operating Pressures and Temperatures

Type	Size	PSI @ Temp Steam	PSI @ Temp W.O.G.
YF600	2" - 20"	600 838°F	1480 100°F
YF600SS	2" - 20"	600 1125°F	1235 100°F

Standard Screens

Size	Std.	Opening
2" - 3"	3/64" perf	0.045"
4" - 20"	1/8" perf	0.125"



Dimensional Data

Size		A	B	Blow-Off NPT	Shipping Weight (lbs)
Inches	Prefix				
2	0200	11	6 1/8	1/2	53
2 1/2	0250	12	7 1/4	3/4	79
3	0300	13 1/2	8	1	100
4	0400	17 15/16	9 3/8	1 1/2	210
5	0500	22 1/4	12 3/8	2	330
6	0600	25 5/8	17 1/4	2	410
8	0800	31 3/4	18 1/2	2	834
10	1000	37 11/16	21 5/8	2	1200
12	1200	45 1/2	26 3/4	2	1445
14	1400	46 3/4	31 1/16	2	1672
16	1600	47 3/4	34 3/16	2	2100
18	1800	49 1/2	39	2	3100
20	2000	56 7/8	45	2	3400

Ordering Information

Example: Include full description

Size (Prefix) Model Number *Screen Opening

0400 - YF600SS -125

4", Y Strainer, Cast Stainless Steel,
 600# A.N.S.I., Flanges with 1/8" Perf Screen

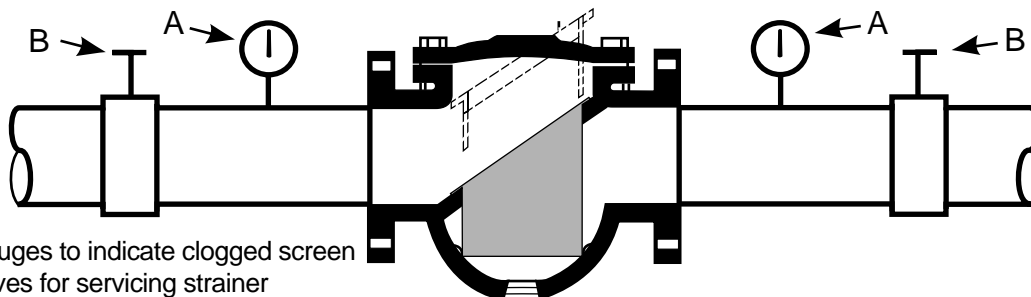
Notes

Manufacturer reserves the right to modify dimensions, materials, or design. Contact factory for certification.



Basket Strainers

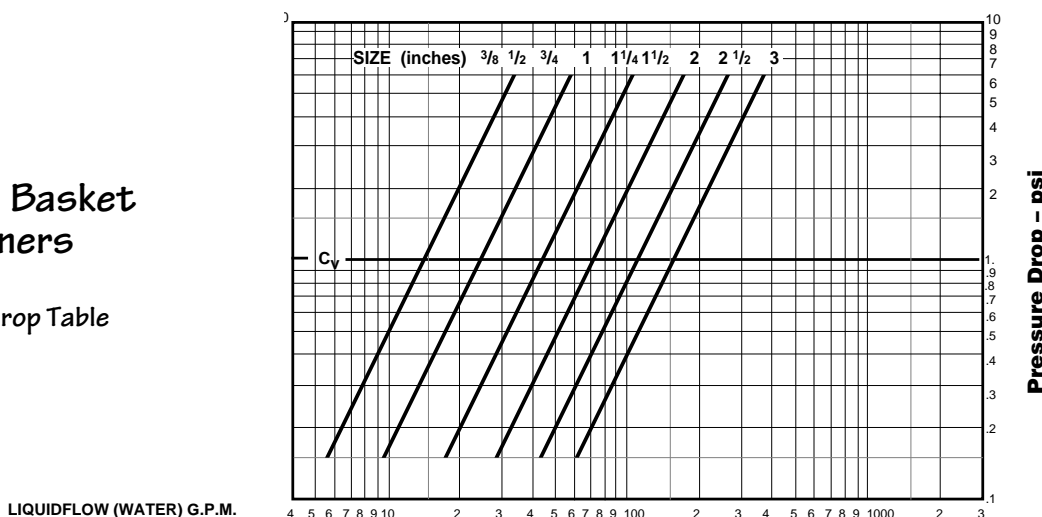
Basket Strainers feature top removal of the screen. The screen is in the form of a basket, with a lifting handle, so that all particulate captured and retained by the screen can be easily removed for disposal. They are intended for applications where larger amounts of solid particulate are expected, and where clean-out will be frequent. Most models have a standard or optional "Quick Release Cover" to allow fast and easy screen removal without the use of tools. For easily flushable solids, a modified cone-bottom basket can be fitted, with automatic or manual blow-down through the drain port. This will allow clean-out without removal of the screen, and without interrupting the process flow.



- A. Pressure gauges to indicate clogged screen
- B. Isolation valves for servicing strainer

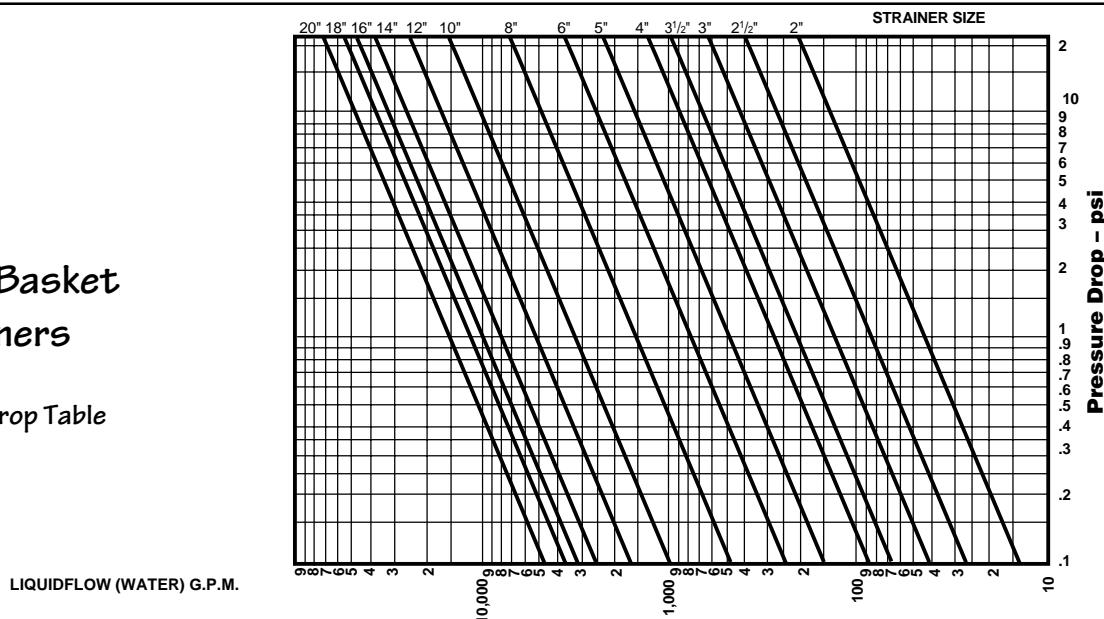
Threaded Basket Strainers

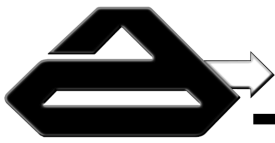
Pressure Drop Table



Flanged Basket Strainers

Pressure Drop Table





Cast Simplex Strainers

Cast Iron, NPT Threaded

BTC-125 Cast Iron, Swivel Clamp Cover



Features:

S.F. Basket Strainers feature top removal of the screen. The screen is in the form of a basket, with a lifting handle, so that all particulate captured and retained by the screen can be easily removed for disposal. They are intended for applications where larger amounts of solid particulate are expected, and where clean-out will be frequent. Models are standard with "Swivel Clamp Cover" to allow fast and easy screen removal without the use of tools. Basket and cover both have BUNA-N O-ring seals eliminating the need to change gaskets each time the strainer is serviced.

Construction

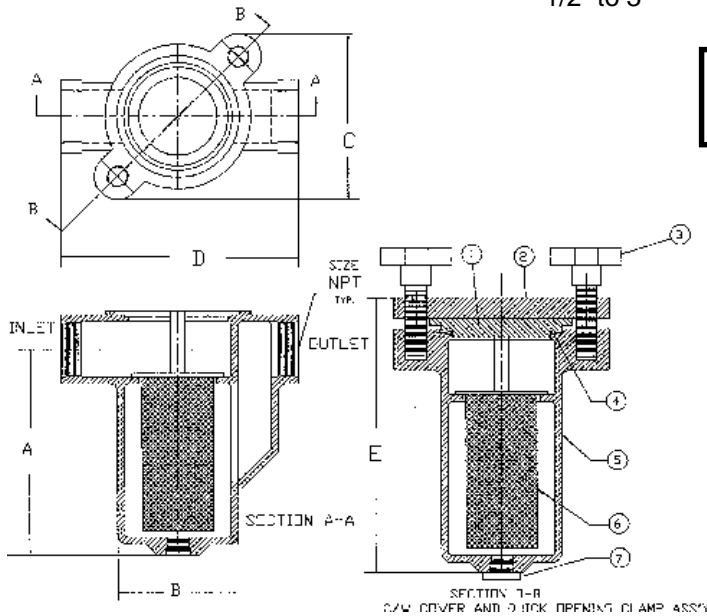
Item	Desc.	Material	Qty
1	Cover	ASTM SPEC A126 Cast Iron	1
2	Clamp	ASTM SPEC A126 Cast Iron	1
3	Bolting	SAE J429 Grade 2 Zinc Plated	2
4	O-Ring	BUNA-N	1
5	Cast Body	ASTM SPEC A126 Cast Iron	1
6	Basket Ass'y	Stainless Steel Construction	1
7	Drain Plug	ASTM A105	1

Standard Screens

1/2" to 3" .032 Perf

Working Pressures and Temperatures

200 PSI at 100°F



Dimensional Data

Size	Prefix	C	D	E	Drain	Shipping Wgt (lbs.)
3/8	0038	5 7/16	6 3/8	7	1/2	10
1/2	0050	5 7/16	6 3/8	7	1/2	10
3/4	0075	5 7/16	6 7/8	7 5/8	1/2	18
1	0100	5 7/16	6 7/8	7 5/8	1/2	18
1 1/4	0125	5 7/8	8 3/8	9 3/4	3/4	30
1 1/2	0150	5 7/8	8 3/8	9 3/4	3/4	30
2	0200	6 5/8	9 5/8	9 3/4	1	50
2 1/2	0250	8 3/16	12 3/4	12	1 1/2	62
3	0300	8 5/16	13 1/4	15 3/4	1 1/2	62

Ordering Information

Example: Include full description

Size (Prefix)	Model Number	*Screen Opening
---------------	--------------	-----------------

0150 - BTC 125 - 016

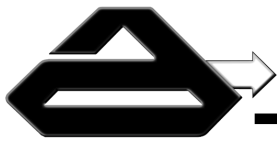
1-1/2" NPT, Basket Strainer,
Cast Iron, 40 Mesh Screen

Notes

Manufacturer reserves the right to modify dimensions, materials, or design. Contact factory for certification.

Optional Features

- Baskets with any chosen perforations
- Baskets are available in other materials
- Replaceable inserts available from 20 to 300 mesh.



Cast Simplex Strainers

Cast Bronze, Cast Steel & Cast Stainless Steel, NPT Threaded

SBT150B Bronze, SBT150SS Stainless Steel & SBT150 Cast Steel



Features:

S.F. Basket Strainers feature top removal of the screen. The screen is in the form of a basket, with a lifting handle, so that all particulate captured and retained by the screen can be easily removed for disposal. They are intended for applications where larger amounts of solid particulate are expected, and where clean-out will be frequent. Models are standard with "Quick Release Cover" to allow fast and easy screen removal without the use of tools. Basket and cover both have BUNA-N O-ring seals (Viton for stainless steel), eliminating the need to change gaskets each time the strainer is serviced.

Construction

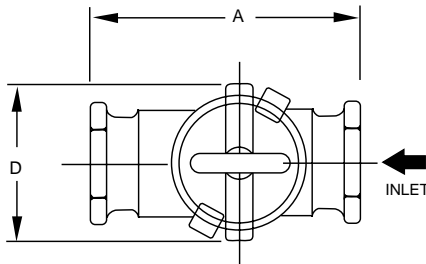
Bronze Body & Cover, ASTM SPEC B62-Bronze

Carbon Steel Body & Cover, ASTM SPEC A216, Grade WCB

Stainless Steel Body & Cover, ASTM SPEC A351, Grade CF8M

Standard Screens

Perf Sizes: 3/32". Others POA.

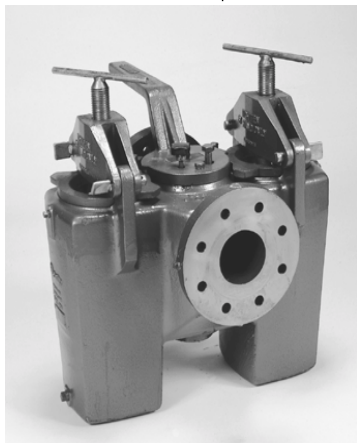


Working Pressures and Temperatures

200 PSI at 100°F

Dimensional Data

Size		A	B	C	D	E	F	Shipping Wgt (lbs.)
Inches	Prefix							
3/8	0038	4	4	6 5/8	2 7/8	11	3/8	10
1/2	0050	4	4	6 5/8	2 7/8	11	3/8	10
3/4	0075	5 3/8	5	8 3/8	4	13	1/2	18
1	0100	5 3/8	5	8 3/8	4	13	1/2	18
1-1/4	0125	6 3/4	5 7/8	9 7/8	4 7/8	14	1/2	30
1-1/2	0150	7	6 1/2	10 5/8	6	14 7/8	3/4	30
2	0200	8 1/2	7 1/2	11 5/8	7 1/2	17 3/8	1 1/4	50
2-1/2	0250	11 1/2	9 1/8	15 1/4	8	22 3/8	1 1/4	62
3	0300	11 1/2	9 1/8	15 1/4	8	22 3/8	1 1/4	62



Ordering Information

Example: Include full description

Size (Prefix)	Model Number	*Screen Opening
------------------	-----------------	--------------------

0150 - SBT150SS - 016

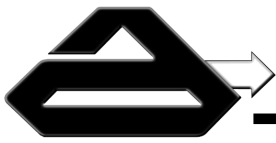
1-1/2" NPT, Basket Strainer,
Cast Stainless Steel, 40 Mesh Screen

Notes

Manufacturer reserves the right to modify dimensions, materials, or design. Contact factory for certification.

Optional Features

- Baskets with any chosen perforations
- Baskets are available in other materials
- Gauge tappings if required
- Replaceable inserts available from 20 to 300 mesh.



Basket Strainers

Cast Iron, Flanged

Type BF125 Cast Iron & BFC125 with Quick Release Cover, 125# A.N.S.I. Flanges



Features

S.F. 125# A.N.S.I. Flanged basket strainers in Cast Iron are available with bolted or quick release clamped cover. Clamp cover units (Model BFC) are ideally suited for applications where frequent clean-out of the basket is expected. Having a spare, clean basket on hand will greatly reduce the cleaning time, and differential pressure gauges, with alarms can be supplied to get the maximum on-stream time between cleaning cycles.

Construction

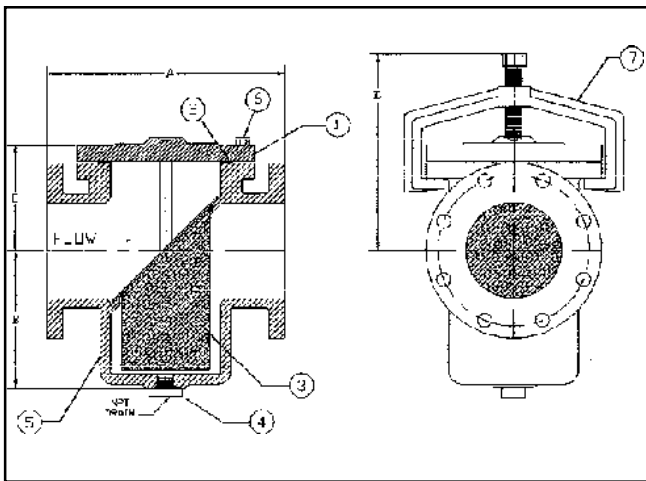
Body & Cover, ASTM SPEC A126, Class B
Baskets are Stainless Steel

Operating Pressures and Temperatures

Type	Size	PSI @ Temp Steam		PSI @ Temp W.O.G.	
BF125	2" - 20"	125	350°F	150	150°F
BFC125	2" - 12"	125	250°F	150	150°F

Standard Screens

Size	Std.	Opening
2" - 3"	3/64" perf	0.045"
4" - 30"	1/8" perf	0.125"



Dimensional Data

Size		A	B	C	D	Blow Off NPT	Clear- ance For Bskt Removal	Shipping Weight (lbs)
Inches	Prefix							
2	0200	8 1/8	8 3/4	5	7 1/2	3/4	5 3/8	34
2 1/2	0250	8 1/4	9 11/16	5 3/8	8	3/4	6 5/16	43
3	0300	9 7/8	10 1/2	6 1/2	8	3/4	8	60
4	0400	11 1/2	14 9/16	8	10 1/2	1	9 5/16	120
5	0500	13 1/8	15	8	11 1/2	1	10 1/4	140
6	0600	14 7/8	15 1/4	8 5/8	12	1	11 1/8	164
8	0800	18 11/16	20 3/4	11 3/4	15	1	15 9/16	330
10	1000	20 1/8	24 1/4	13 3/4	15	1	18	470
12	1200	26 1/4	29 1/4	16 3/8	17 1/2	1	23 1/4	820
14	1400	30 1/4	36 3/8	22 3/8		2	26 1/4	1300
16	1600	33 1/8	38 1/4	23 5/8		2	28 1/8	1600
18	1800	38 3/8	38	28 3/8		2	26 3/4	2260
20	2000	41 1/2	43 5/8	32 3/8		2	34 1/8	2980

Ordering Information

Example: Include full description

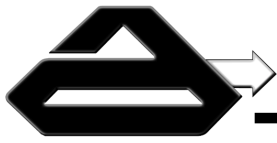
Size Model *Screen
(Prefix) Number Opening

0400 - BFC125 -125

4" FLGD, 125# A.N.S.I. Flanges, Basket Strainer, Cast Iron, with 1/8" Perf. Screen & Quick Release Cover

Notes

Manufacturer reserves the right to modify dimensions, materials, or design. Contact factory for certification.



Basket Strainers

Cast Bronze, Carbon Steel, Cast 316SS, 150# Flanged

Type BF150B Cast Bronze, BF150 Cast Steel & BF150SS Cast Stainless Steel



Features

S.F. 150# A.N.S.I. Flanged basket strainers are available in Cast Bronze, Cast Steel and Cast Stainless Steel. For contaminant that is easily flushable from the screen, a valve can be supplied for the blow-off port.

Construction

Bronze - Body & Cover, ASTM SPEC B62-Bronze
Carbon Steel - Body & Cover, ASTM SPEC A216, Grade WCB
Stainless Steel - Body & Cover, ASTM SPEC A351, Grade CF8M

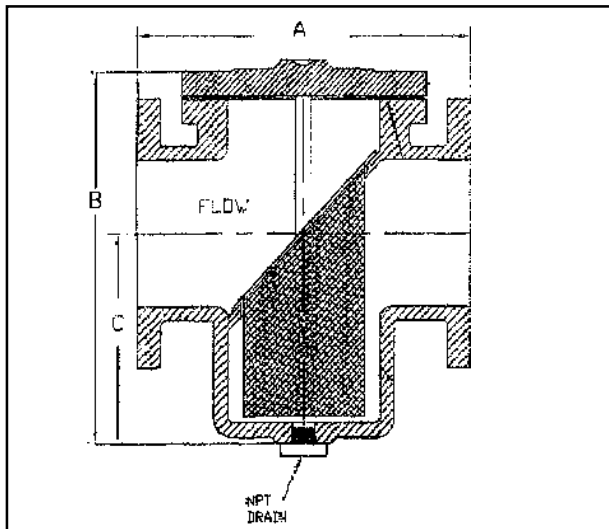
Baskets are Stainless Steel

Operating Pressures and Temperatures

Type	Size	PSI @ Temp W.O.G.
BF150B	2" - 12"	225 100°F
BF150	2" - 12"	285 100°F
BF150SS	2" - 12"	235 100°F

Standard Screens

Size	Std.	Opening
2" - 3"	3/64 perf.	0.045"
4" - 12"	1/8 perf.	0.125"



Dimensional Data

Size		A	B	C	Blow Off NPT	D Clearance For Bskt Removal	Shipping Weight (lbs)
Inches	Prefix						
2	0200	8 1/8	8 3/8	5	1	5 3/8	34
2 1/2	0250	8 3/4	10	5 3/4	1	6 5/16	43
3	0300	9 7/8	11 1/4	6 1/2	1	8	60
4	0400	11 1/2	13 1/2	8 3/4	1	9 5/16	120
5	0500	13 1/8	14 5/8	8 7/16	1	10 1/4	140
6	0600	14 7/8	15 5/8	9	1	11 1/8	164
8	0800	18 11/16	21	12 1/8	1	15 9/16	330
10	1000	20 1/8	24 1/2	16 3/4	1	18	470
12	1200	26 1/4	29 3/4	16 3/8	1	23 1/4	820

Larger sizes available. Consult factory.

Ordering Information

Example: Include full description

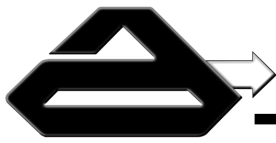
Size (Prefix)	Model Number	*Screen Opening
------------------	-----------------	--------------------

0400 - BF150SS - 125

4", Basket Strainer, Cast Stainless Steel,
 150# A.N.S.I. Flanges, with 1/8" Perf. Screen

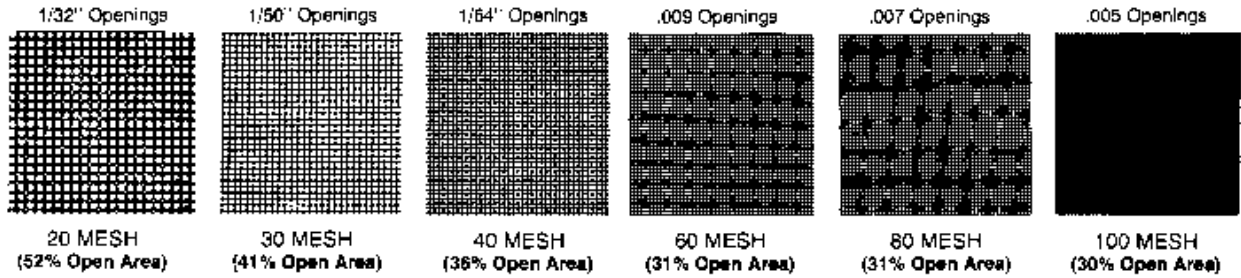
Notes

Manufacturer reserves the right to modify dimensions, materials, or design. Contact factory for certification.

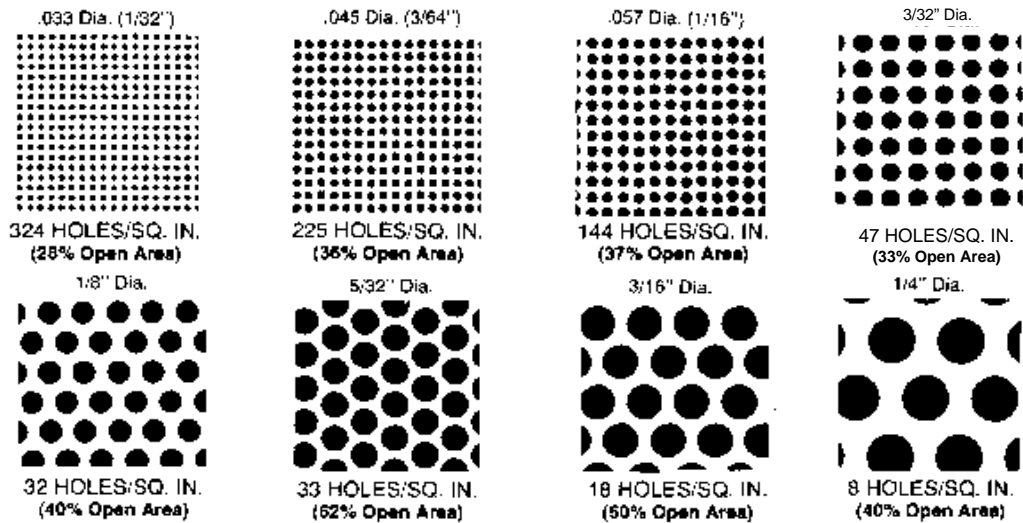


Perforated Metal and Mesh

AVAILABLE IN ALL MATERIALS



MESH SIZES OTHER THAN SHOWN—AVAILABLE ON APPLICATION



Mesh - Inch - Micron Conversion Chart

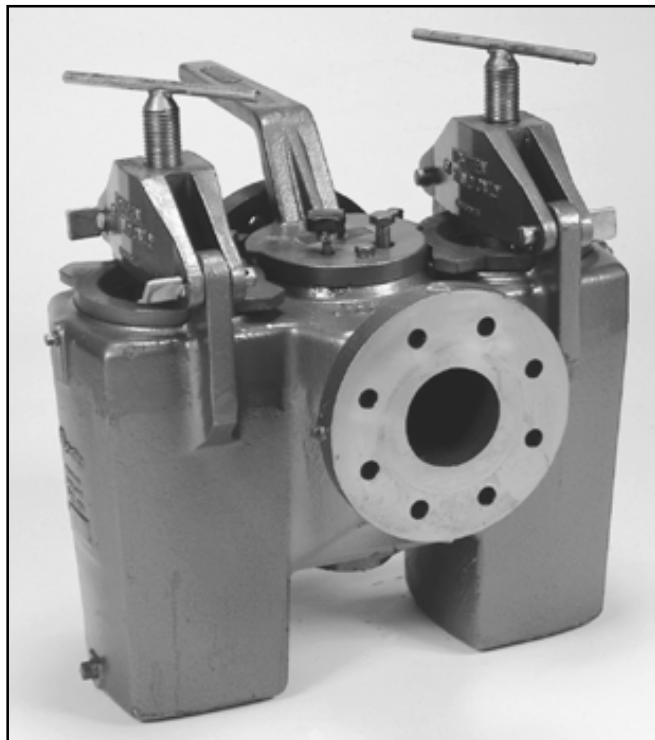
Meshes/Lineal Inch US and ASTM Std. Sieve No.			Meshes/Lineal Inch US and ASTM Std. Sieve No.		
	Actual Opening Inches	Microns		Actual Opening Inches	Microns
10	.075	1905	130	.0043	109
12	.060	1524	140	.0042	107
14	.051	1295	150	.0041	104
16	.045	1143	160	.0038	97
18	.039	991	170	.0035	89
20	.034	864	180	.0033	84
24	.028	711	200	.0029	74
30	.020	508	250	.0024	61
35	.018	457	300	.0018	46
40	.015	381	400	.0015	38
50	.011	279	120 x 400	.0016	40
60	.009	229	80 x 700	.0012	30
70	.008	203	200 x 600	.0010	25
80	.007	178	165 x 1400	.0007	17
100	.006	152	200 x 1400	.0004	10
120	.0046	117	325 x 2300	.0002	5



Duplex Strainers

Cast Iron, Cast Steel and Cast 316SS

Duplex Strainers 1" to 4", Model DPLX 120



Materials

- **Standard**
Cast Iron - ASTM-A.S.278-CL.30
Cast Steel - ASTM-A.216-W.C.A.
Cast Stainless Steel - ASTM-A296-CF8M
- **Flange Drilling**
Standard 125#, 250# FF for cast iron
Standard ANSI Cast Steel/Stainless Steel
150#, 300# RF
- **Baskets**
Standard, Stainless Steel with perforations of 3/32".
Baskets can be supplied with alternative
perforations and materials.

Notes

Manufacturer reserves the right to modify dimensions, materials, or design. Contact factory for certification.

Features

S.F. Duplex 1" to 4" Strainers can be used for both water, oil and chemical service. Available in cast iron, cast steel or stainless steel to meet pressure rating requirements up to 720 psig and working temperatures to 400°F. This range of Duplex Strainers incorporates two strainer baskets and one integral valve which allows flow through either basket, enabling a basket to be cleaned without a shutdown in flow.

Fixed stops indicate which basket is in use and a projecting flange on the changeover handle guards the cover of the basket in use, making it impossible to inadvertently remove it while on line.

Standard Features

- Hand Operated
- No tools required for servicing
- Strainer change can be made without interrupting flow
- No lifting jack or hydraulic shock on changeover
- No possibility for accidental shut-off or flow
- Viton O-rings

Optional Equipment

- Pressure differential gauge or switch
- Replaceable mesh inserts for fine filtration

Working Pressure

Up to 250 psig at 100°F in cast iron.
Up to 720 psig at 100°F in cast steel/stainless steel.

Working Temperatures (Standard Viton seals)

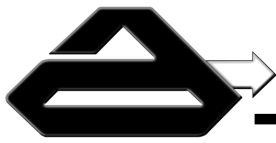
Up to 250°F in cast iron.
Up to 400°F in cast steel/stainless steel.

Lubrication

A system of lubricating ducts is incorporated in the parallel plug valve. This ensures that the valve is sealed against leakage and provides an inert barrier which protects the metal surfaces and reduces corrosion. The valve is sealed at top and bottom by 'O' rings.

Type 733 - A single multi-purpose lubricant is injected in stick form, 1/2" diameter, by a screw top of the valve. Lubrication should be carried out with the valve fully open.

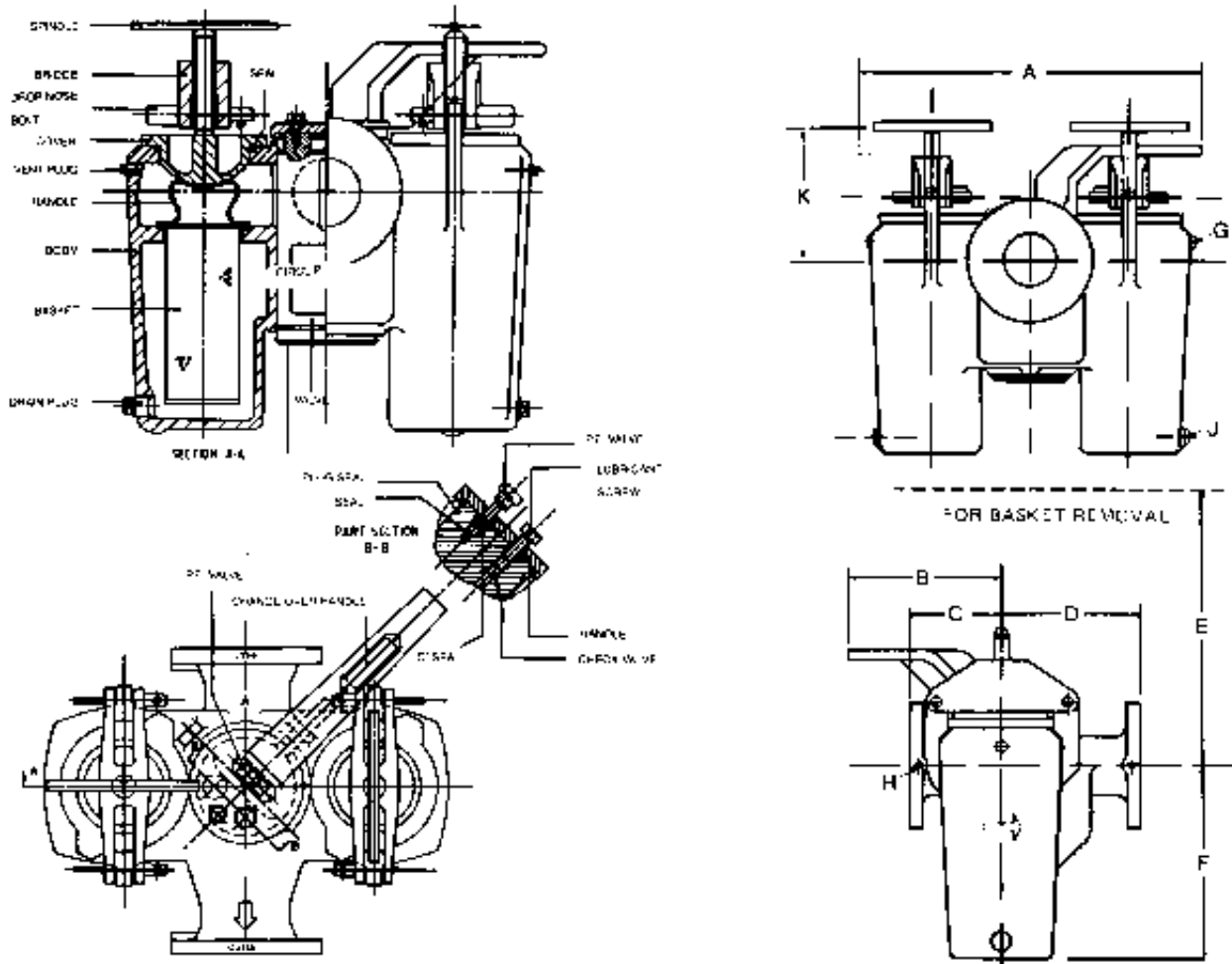
Other types of sealant are available for special applications.



Duplex Strainers

Cast Iron, Cast Steel and Cast 316SS

Duplex Strainers 1" to 4", Model DPLX 120



Working Pressure

Up to 250 psig at 100°F in cast iron.
Up to 720 psig at 100°F in cast steel/stainless steel.

Working Temperatures

Up to 250°F in cast iron.
Up to 400°F in cast steel/stainless steel.
For typical strainer specification see page 30.

Lubrication

A system of lubricating ducts is incorporated in the parallel plug valve. This ensures that the valve is sealed against leakage and provides an inert barrier which protects the metal surfaces and reduces corrosion. The valve is seated at top and bottom by "O" rings.

Type 733 - A single multi-purpose lubricant is injected in stick form, 1/2" diameter, by a screw top of the valve. Lubrication should be carried out with the valve fully open.

Other types of sealant are available for special applications.

	SCREWED		FLANGED					
	1"	1 1/2"	1"	1 1/2"	2"	2 1/2"	3"	4"
A	13	13 1/16	13 1/16	13 1/8	12 7/8	15 3/8	17 1/4	25 5/16
H	9	9	9	9	8 5/8	10	12	7
C	4 1/4	4 1/4	4 1/4	4 1/4	5 1/8	5 1/4	7 3/16	7 5/8
D	3 3/4	3 5/8	4 3/8	4 1/4	5 1/8	7 1/8	9 1/8	10 1/2
E	8 3/4	8 1/2	8 1/2	8 1/2	10 1/8	12 5/16	13 3/4	16 3/8
F	4 3/16	6 3/16	4 3/8	6 3/16	7 1/8	9 1/8	11 1/4	14 3/8
G	*	*	*	*	*	*	*	*
H	*	*	*	*	*	*	*	*
J	1/4	1/2	1/2	1/4	1/2	1/2	1/2	1/2
K	5 1/2	5 1/2	5 1/2	5 1/2	7 1/8	7 1/4	10 1/8	10 3/8
W:	44	54	50	70	106	160	236	400

*1/4" NPT provided as standard.



Duplex Strainers

Cast Iron and Cast Steel

Duplex Strainers 6" to 30", Model DPLX 120



Features

Duplex 6" to 30" Strainers can be used for both water, oil and chemical service.

They are available in cast iron or cast steel to meet pressure rating requirements up to 350 psig and working temperatures to 400°F.

Two disc valves operated by screwed shafts provide a positive method for changeover from one strainer to the other without a shutdown in flow. The valves are sleeved and totally protected from the liquid. They operate simultaneously so that while one is being opened the other automatically closes or the other way around. Valve shafts are equipped with an indicator showing which valve is on-stream. Pressure equalizing valves are standard on all large Duplex Strainers.

Standard Features

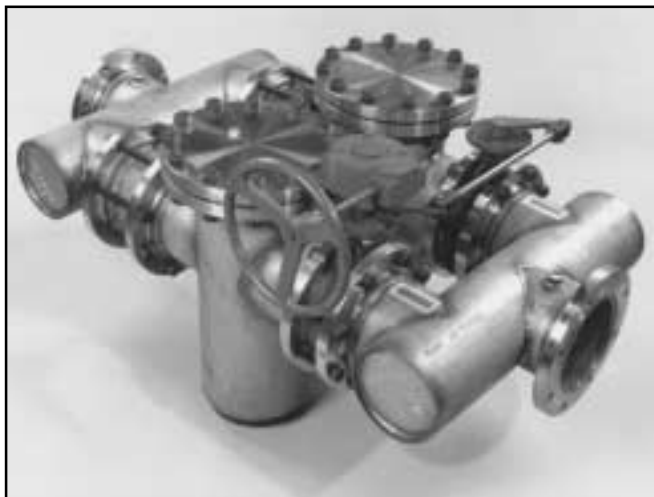
- Hand operated
- No tools required for servicing
- Strainer change can be made without interrupting flow
- Multiple baskets in the large sizes

Optional Equipment

- Electrical operation of the valves can be provided either on the actuator or remotely.
- Pressure differential gauge or switch.
- Replaceable mesh inserts for finer filtration (20 or 300 mesh)

Dual Basket Strainers

An economical alternate to the conventional duplex strainers - see Dual Basket Strainers section for details.



Materials - 6" to 30" Range

Body and Covers	Cast Iron ASTM-A.S.278-CL.30 Cast Steel ASTM-A.216-W.C.A.
Strainer Baskets and Mesh Inserts	Stainless Steel AISI 316 (perforations of 3/32 standard)
Shafts	Stainless Steel 316
Disc Valves	Bronze/Stainless Steel 316
Valve Seats	Bronze/Stainless Steel 316

Working Pressure:

Cast Iron ANSI 125FF - 150 psig
(Except 22"-30" - 75 psig)
Cast Steel ANSI 150/300 RF - 300 psig
(Except 22"-30" - 200 psig)

Hydrostatic Test:

1-1/2 times working pressure

Working Temperature:

Cast Iron 250°F; Cast Steel 400°F



Duplex Strainers

Cast Iron and Cast Steel

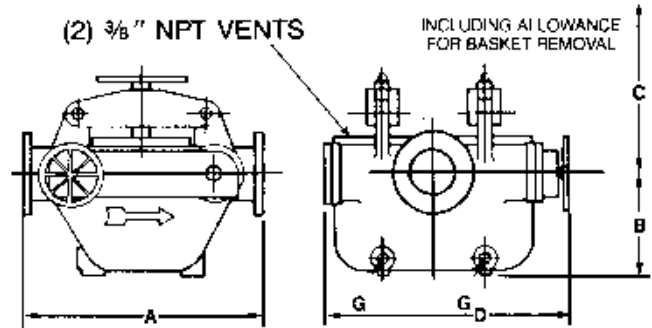
Duplex Strainers 6" to 30", Model DPLX 120

Simplex Strainers 1" to 12"

6"-8" Range

Bore Conn.	Baskets per unit	A in.	B in.	C in.	D in.	G NPT	Weight Lb.
6	2	32 ⁷ / ₈	13 ¹ / ₂	27 ¹ / ₂	43 ¹ / ₂	1 ¹ / ₂ "	1003
8	2	40	13 ¹ / ₂	31	43 ¹ / ₂	1 ¹ / ₂ "	1342

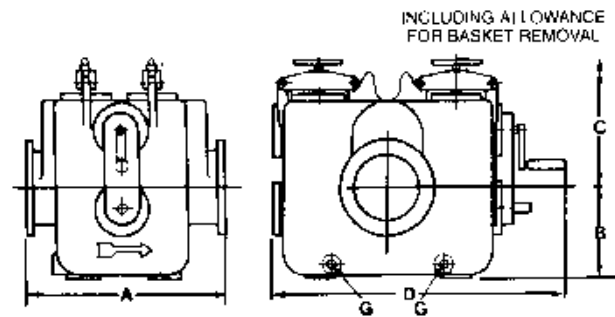
Working Pressure: Cast Iron ANSI 125FF-150 psig
 Cast Steel ANSI-150/300 RF-350 psig
 Hydrostatic Test: 1¹/₂ Times Working Pressure
 Working Temperature: Cast Iron 250°F; Cast Steel 400°F



10"-30" Range

Bore Conn.	Baskets per unit	A in.	B in.	C in.	D in.	G NPT	Weight Lb.
10	4	40 ¹ / ₂	14	44	58 ³ / ₈	1 ¹ / ₂ "	3010
12	4	40 ¹ / ₂	15	44	58 ³ / ₈	1 ¹ / ₂ "	3080
16	4	49 ³ / ₈	22	66	68 ¹ / ₄	1 ¹ / ₂ "	5264
18	4	50	23	65	68 ¹ / ₄	1 ¹ / ₂ "	5340
20	4	50	24	64	68 ¹ / ₄	1 ¹ / ₂ "	5420
22	8	95 ¹ / ₂	25 ¹ / ₄	73	76 ¹ / ₄	2"	13832
24	8	91 ¹ / ₂	25 ¹ / ₄	73	76 ¹ / ₄	2"	13888
26	8	86 ¹ / ₄	25 ¹ / ₄	73	76 ¹ / ₄	2"	13944
30	8	86 ¹ / ₄	25 ¹ / ₄	73	76 ¹ / ₄	2"	14000

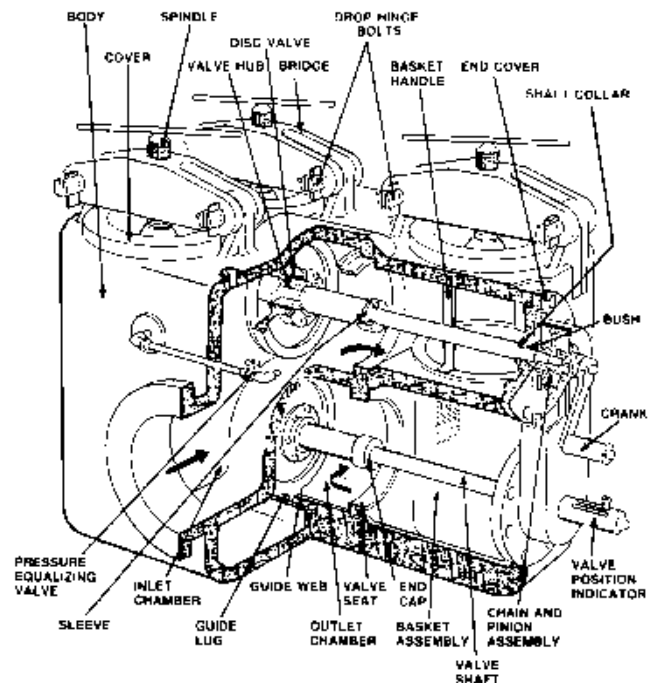
Working Pressure: Cast Iron ANSI 125FF-150 psig
 (Except 22"-30" - 75 psig)
 Cast Steel ANSI 150/300 RF - 300 psig
 (Except 22"-30" - 200 psig)
 Hydrostatic Test: 1¹/₂ times working pressure
 Working Temperature: Cast Iron 250°F; Cast Steel 400°F



Changeover gear on right hand side looking on inlet as standard
 Available on left hand side as optional alternative at extra cost.
 Tolerance: plus or minus 1:8"

Materials - 6" to 30" Range

Body and Covers	Cast Iron ASTM-A.S.278-CL.30 Cast Steel ASTM-A.216-W.C.A.
Strainer Baskets and Mesh Inserts	Stainless Steel AISI 316 (perforations of ² / ₃₂ standard))
Shafts	Stainless Steel 316
Disc Valves	Bronze/Stainless Steel 316
Valve Seats	Bronze/Stainless Steel 316

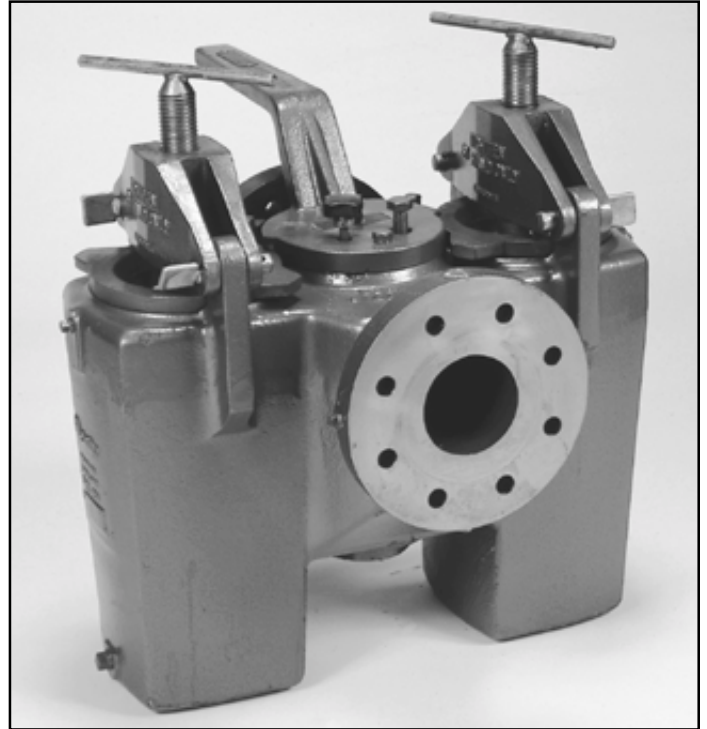
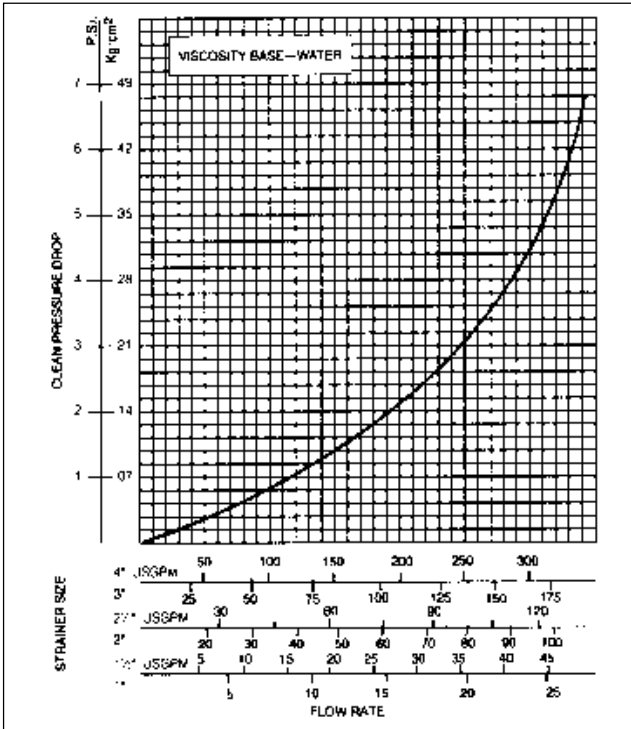




Technical Information

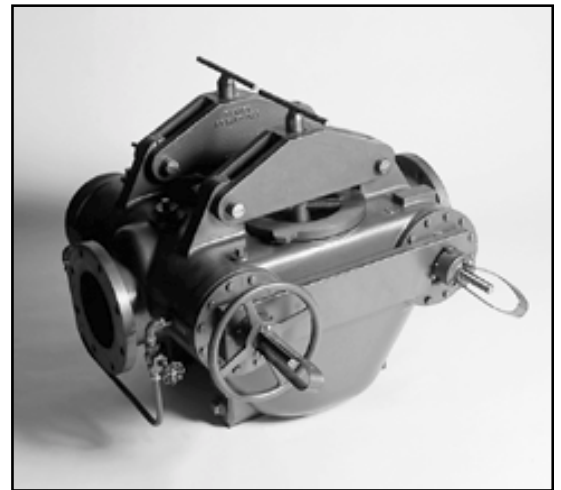
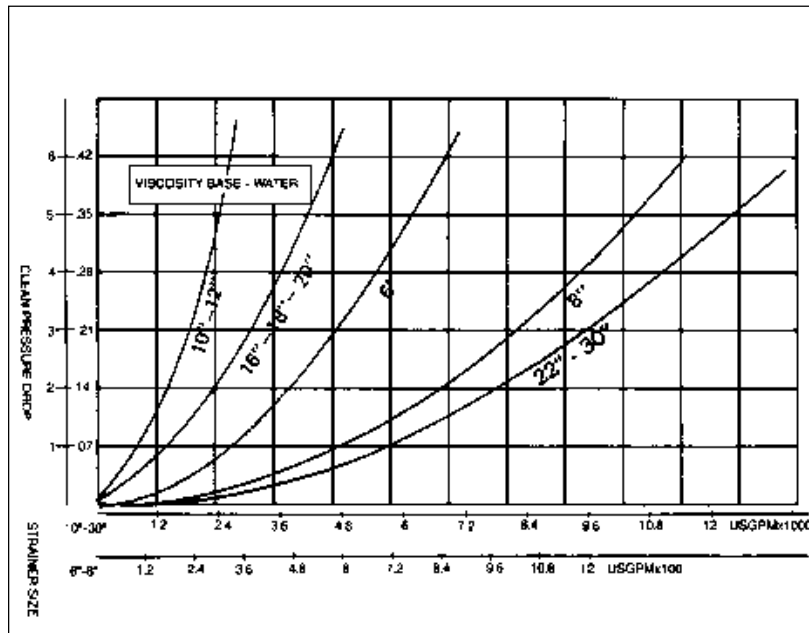
Duplex Strainers 1" to 4"

Pressure drop for strainers with 3/32" or 1/8" perforated baskets (*one chamber only*)



Duplex Strainers 6" to 30"

Pressure drop for strainers with 3/32" or 1/8" perforated baskets (*one chamber only*)



Notes

Manufacturer reserves the right to modify dimensions, materials, or design. Contact factory for certification.



Dual Basket Strainers

Cast Iron, Carbon Steel, Stainless Steel

S.F. Dual Basket Strainers are an innovative and economical alternative to conventional Duplex strainers. They are designed for applications where flow cannot be shut down to service the strainer screen. Changeover is accomplished by use of a hand wheel operator on a buna lined (standard), butterfly valve. This arrangement provides a bubble-tight shut off between basket chambers, essential for use in gas or negative head pump suction systems. Basket and flange sizes can be designed to specific requirements by incorporating S.F. Fabricated strainers. Standard units are in Cast Iron with 125# A.N.S.I. flanged connections, and Carbon or Stainless Steel with 150# A.N.S.I. flanged connections. Many other options are available including higher pressure ratings, automatic air vents, quick opening covers, special internal coatings, backwash connections and more. We will help you select the best S.F. DUAL BASKET STRAINER for your specific application.



S.F. Model BDB bolted design Dual basket strainer is standard in Cast Iron with 125# A.N.S.I. flanged connections in sizes 2" through 18". Baskets can be supplied with bolted or quick release clamped covers.

Consult factory for dimensional data and other specifications.

S.F. Model DB welded design Dual basket strainers are a very economical alternative to standard uni-casting duplex strainers in cast steel and stainless steel materials. Because they are fabricated to your specific requirements, they are available in up to 2500 lb A.N.S.I. ratings, and with your choice of valves.

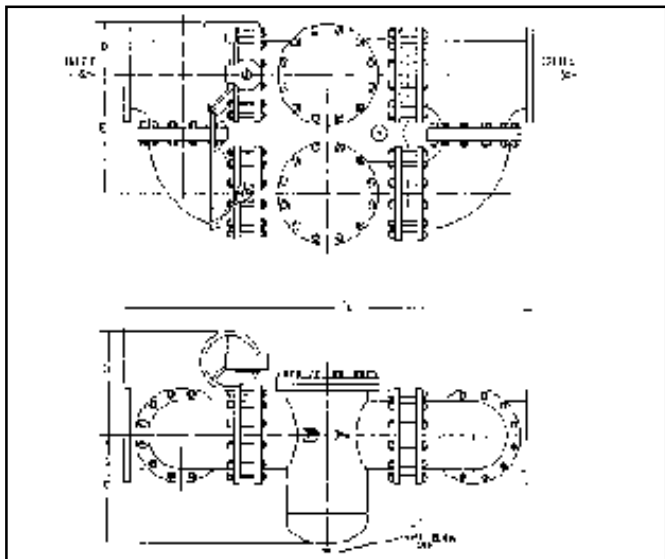




Dual Basket Strainers

Cast Iron, Carbon Steel, Stainless Steel

Type BDB125 Bolted Dual Basket Strainer - Cast Iron



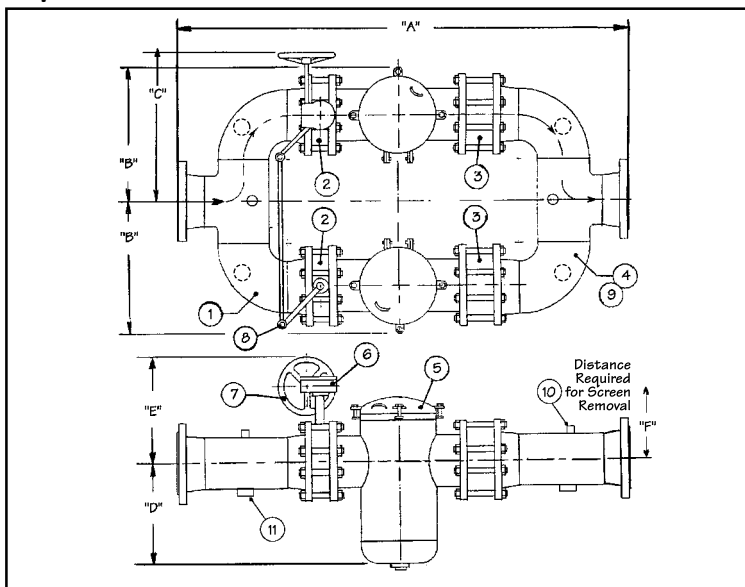
Dimensional Data

Size		A	B	C	D	E	F	Weight lbs.
Inches	Prefix							
2	0200	30	10 1/2	5	6	9	1	170
2 1/2	0250	32 3/4	11	5 5/16	6 1/2	10	1	230
3	0300	36	11 1/2	6 1/2	7	11	1	300
4	0400	42	12	8	7 1/2	13	1	460
5	0500	48	12 1/2	8	8	15	1	580
6	0600	52	13	8 5/8	8 1/2	16	1	800
8	0800	61	14 1/2	11 3/4	9 1/2	18	1	1350
10	1000	70 3/4	17	13 3/4	11	22	1	2050
12	1200	83	19	16 3/8	12 1/2	24	1	3300
14	1400	96 1/2	20	22 1/4	13 1/2	28	1	4700
16	1600	104 3/4	21	23 1/4	14 1/2	30	1 1/2	6300
18	1800	123 3/4	23	24	15	37	3	8400

Standards: ANSI B16.5
 Design Code: ASME B31.1
 Max. Working Pressure: 200 psig

Max. Working Temperature: 200°F
 Hydrostatic Test: 300 psig for 1/4 hour
 Service: W.O.G.

Type DB150, DB150SS Fabricated Dual Basket Strainer - Carbon Steel, Stainless Steel



Bill of Material

Item	Description	Material	Qty.
1	Inlet/Outlet Tank Ass'y	C.Steel*	2
2	Studs	B7 Steel	16
3	Wafer Style Check Valve		2
4	Studs	B7 Steel	As Required
5	Hex Nuts	2H Steel	As Required
6	Gasket Ring	Red Rubber	4
7	Butterfly Valve		2
8	Nameplate	Aluminum	1
9	Basket Strainer Body		2
10	Half Coupling	C. Steel*	2
11	Vent Plug	C. Steel*	4
12	Support Legs	C. Steel*	4
13	Mounting Pads	C. Steel*	4
14	Weld Caps	C. Steel*	4
15	Slave Linkage Ass'y	C. Steel*	1
16	Gear Actuator		1

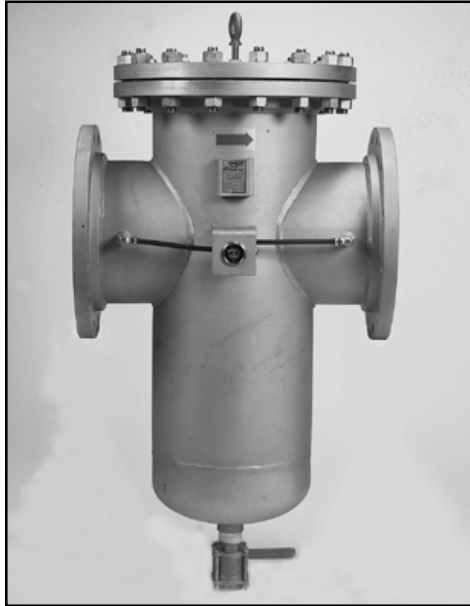
*Stainless Steel for DB150SS

Dimensional Data

Size		A	B	C	D	E	F	G	H	J	K	L	M	N	Weight lbs.
Inches	Prefix														
6	0600	48 1/4	23 5/8	24 5/8	6 1/2	13 1/16	7 3/4	1	8 5/8	30 7/8	6	As Required	34 1/4	19	600
8	0800	57 1/2	27 7/8	29 5/8	9 3/4	14 9/16	7 3/4	1	11 3/4	40 3/8	8	As Required	41 1/8	25	1,150
10	1000	64 3/4	31 7/16	33 5/16	12	15 13/16	7 3/4	1	13 3/4	49	10	As Required	45 7/8	29	1,700
12	1200	77 13/16	37 1/2	40 5/16	12	19 1/2	10 1/2	1	16 3/8	53	12	As Required	56 7/16	37	2,600
14	1400	86 1/8	40 7/8	45 1/4	13	26	10 1/2	2	22 1/4	57 1/4	14	As Required	63 3/8	41	4,000
16	1600	97 3/4	45 13/16	51 15/18	14	29	10 1/2	2	23 1/4	62 1/4	16	As Required	72 1/2	44	5,000
18	1800	106	51 1/16	54 15/16	15	32	10 1/2	2	19	68 1/4	18	As Required	78 3/8	46	6,700



Fabricated Basket Strainers, Flanged



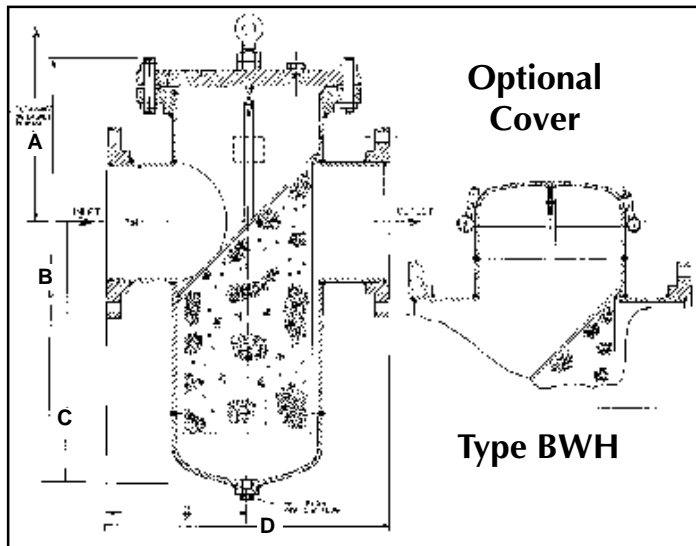
Type BW(H) Carbon Steel & BW(H) SS Stainless Steel with A.N.S.I. Flanges

Features & Construction

S.F. Fabricated Flanged Basket strainers can be designed to your specific application in Carbon Steel or Stainless Steel. 1 1/2" to 24" pipe sizes in 150# and 300# A.N.S.I. flanges are standard, with the capability to supply larger pipe sizes, or 600#, 900#, 1500# and 2500# A.N.S.I. ratings. Basket size can be tailored to hold sufficient solids for the required time between clean-outs. Flange sizes can be chosen to fit existing piping, or to achieve the required clean pressure drop. Maintenance reducing features include Automatic flush and Hinged cover, with or without davit assembly.

Operating Pressures and Temperatures

Type	Size	PSI @ Temp Steam	PSI @ Temp W.O.G.
BW150	1 1/2" - 24"	150 567°F	285 100°F
BW150SS	1 1/2" - 24"	150 567°F	285 100°F



Ordering Information

Example: Include full description

Size (Prefix) Model Number *Screen Opening

0400 - BWH150SS - 125

Basket Strainer, Stainless Steel, 4", 150# A.N.S.I. Flanges, with 1/8" Perf. Screen & Hinged Cover

BW = Bolted Cover
BWH = Hinged Cover

Standard Screens

To be specified - sizes available in stainless steel material:
Perforated Sheet: 1/32, 3/64, 1/16, 3/32, 1/8, 3/16, 1/4, 1/2
Mesh Lined: 20, 30, 40, 60, 80, 100, 120, 160, 200 - and down to 5 microns

Dimensional Data

Size		A	B	C	D	Blow-Off NPT	Weight (lbs.)
Inches	Prefix						
1 1/2	0150	17	14	8	8	1/2	20
2	0200	19	14	8	8 1/8	1/2	27
2 1/2	0250	21	16	9	8 3/4	3/4	34
3	0300	23	18	11	9 7/8	3/4	48
4	0400	27	21	13	11 1/2	1	78
5	0500	30	24	15	13 1/8	1	90
6	0600	33	26	17	14 7/8	1 1/4	140
8	0800	39	31	20	18 11/16	1 1/2	300
10	1000	42	35	23	20 1/8	1 1/2	430
12	1200	50	40	26	26 1/4	2	720
14	1400	55	44	29	30 1/4	2	1010
16	1600	59	49	32	33 1/8	2	1300
18	1800	63	53	34	38 3/8	3	1965
20	2000	69	58	39	41 1/2	3	2600
24	2400	87	70	45	41 1/2	3	4000

*Larger sizes available. Consult factory.

Notes

- 300#, 600# and higher A.N.S.I. pressure ratings available
- auto or manual blow-down feature available

Manufacturer reserves the right to modify dimensions, materials, or design. Contact factory for certification.



Fabricated "Y" Strainers, Flanged

Type FW150 Carbon Steel & FW150SS Stainless Steel Y Strainer with A.N.S.I. Flanges



Features & Construction

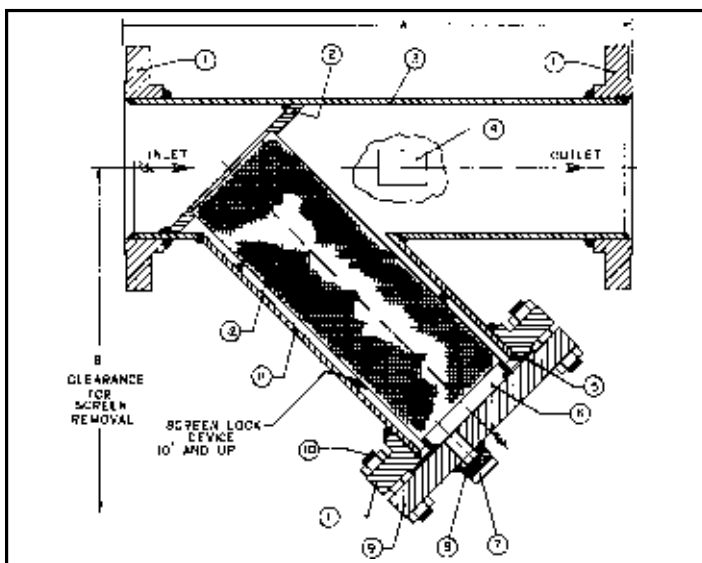
S.F. Fabricated Flanged 'Y' strainers can be designed to your specific application in Carbon Steel or Stainless Steel. 1 1/2" to 24" pipe sizes in 150# and 300# A.N.S.I. flanges are standard, with the capability to supply larger pipe sizes, 600#, 900#, 1500# and 2500# A.N.S.I. ratings. Screen sizes can be tailored to hold sufficient solids for the required time between clean-outs. Flange sizes can be chosen to fit existing piping, or to achieve the required clean pressure drop. Hinge covers are also available for quick opening. Available in any material. Please contact factory for details.

Operating Pressures and Temperatures

Type	Size	PSI @ Temp Steam		PSI @ Temp W.O.G.	
FW150	1 1/2" - 24"	150	567°F	285	100°F
FW150SS	1 1/2" - 24"	150	567°F	285	100°F

Standard Screens

To be specified: sizes available in stainless steel material:
Perforated Sheet: 1/32, 3/64, 1/16, 3/32, 1/8, 3/16, 1/4, 1/2
Mesh Lined: 20, 30, 40, 60, 80, 100, 120, 160, 200 - and down to 5 microns



Dimensional Data

Size		A	B	Blow-Off NPT	Weight (lbs.)
Inches	Prefix				
1 1/2	0150	13	12	1/2	35
2	0200	14	12	1/2	40
2 1/2	0250	15	13	1/2	45
3	0300	17	15	1/2	60
4	0400	20	18	3/4	95
5	0500	23	22	3/4	120
6	0600	25	23	1	150
8	0800	33	32	1	260
10	1000	35	38	1 1/2	380
12	1200	37	40	1 1/2	570
14	1400	42	50	2	680
16	1600	45	52	2	950
18	1800	50	57	2	1100
20	2000	53	60	2	1350
24	2400	63	70	2	1950

*Larger sizes available. Consult factory.

Ordering Information

Example: Include full description

Size (Prefix)	Model Number	*Screen Opening
------------------	-----------------	--------------------

0400 - FW150SS - 125

Y Strainer, Stainless Steel, 4", 150# A.N.S.I.
 Flanges, with 1/8" Perf. Screen

Notes

- 300#, 600# and higher A.N.S.I. pressure ratings available

Manufacturer reserves the right to modify dimensions, materials, or design. Contact factory for certification.



Tee Strainers

Construction

The S.F. Tee Strainer is a custom fabricated compact strainer. Designed to remove foreign pipeline particles from pipelines. This provides the ultimate protection for pumps, valves, and other related equipment. The S.F. Tee Strainer is fabricated to your specification.

The standard S.F. Tee Strainer is constructed of carbon or stainless steel material. We have fabricated numerous assemblies of chrome-moly. Optional materials, end connections and accessories are available.

Standard Features

Size:	2" - 24" (larger on request)
End Connections:	Flanged, butt weld
Body material:	Carbon steel, stainless steel
Pressure rating:	150 psig, 300 psig, 600 psig
Closure:	Bolted
Basket:	304 Stainless steel

Optional Features

- Quick opening cover
- 600, 900 and 1500 lb. pressure ratings
- Variety of basket materials
- Special perf & mesh (min. 5 micron)
- Mounting legs
- Special linings
- Exotic materials ie. Titanium & Zirconium
- Pressure gauge taps
- Drain taps and vents



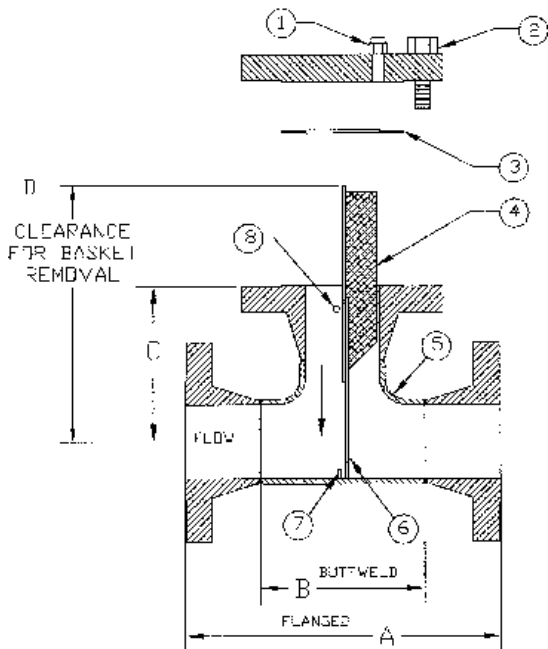
Notes

Manufacturer reserves the right to modify dimensions, materials, or design. Contact factory for certification.

Tee Strainers Flanged TW 150/300

Parts List

Item	Description	Item	Description
1	Vent Assembly	5	Body Assembly
2	Bolting	6	Body Ring
3	Gasket	7	Screen Guide
4	Basket	8	Cross Bar



Size Inches	TW150				TW300			
	A	B	C	D	A	B	C	D
2	10	5	5	13	10 1/2	5	5 1/4	13
2 1/2	11 1/2	6	5 3/4	13	12	6	6	13
3	12 1/4	6 3/4	6 1/8	14	13	6 3/4	6 1/2	14
4	14 1/4	8 1/4	7 1/8	16	15	8 1/4	7 1/2	16
5	16 3/4	9 3/4	8 3/8	19	17 1/2	9 3/4	8 3/4	19
6	18 1/4	11 1/4	9 1/8	22	19	11 1/4	9 1/2	22
8	22	14	11	25	22 3/4	14	11 3/8	25
10	25	17	12 1/2	29	26 1/4	17	13 1/8	29
12	29	20	14 1/2	31	30 1/4	20	15 1/8	31
14	32	22	16	38	33 1/4	22	16 5/8	38
16	34	24	17	41	35 1/2	24	17 3/4	41
18	38	27	19	46	39 1/2	27	19 3/4	46
20	41 3/8	30	20 3/4	51	42 3/4	30	21 3/8	51
24	46	34	23	56	47 1/4	34	23 5/8	56



Limited Warranty

R.P. ADAMS COMPANY, INC. - LIMITED WARRANTY

All products are warranted to be free of defects in material and workmanship for a period of one year from the date of shipment, subject to below. **All custom products are not subject to return, credit or refund.**

If the purchaser believes a product to be defective, the purchaser shall:

- (a) Notify R.P. Adams Company, Inc., state the alleged defect and request permission to return the product. Merchandise will not be accepted for return without a "Return Code" clearly marked on the outside of the package. Contact the office to obtain a return code.
- (b) If permission is given, return the product with the transportation **prepaid**. Collect shipments will not be accepted. Goods must be returned prepaid.

If the product is accepted for return and found to be defective, R.P. Adams Company, Inc. will, at its discretion, either repair or replace the product with a product that is of like kind or better, f.o.b. factory, within 60 days of receipt, or issue credit for the product purchase price.

Other than to repair, replace or credit as described above, purchaser agrees that manufacturer shall not be liable for any loss, costs, expenses or damages of any kind arising out of the product, its use, installation or replacement, labeling, instructions, information or technical data of any kind, description of product or use, sample or model, warnings or lack of any of the foregoing.

NO OTHER WARRANTIES, WRITTEN OR ORAL, EXPRESS OR IMPLIED, INCLUDING THE WARRANTIES OF FITNESS FOR A PARTICULAR PURPOSE AND MERCHANTABILITY, ARE MADE OR AUTHORIZED. NO AFFIRMATION OF ACT, PROMISE, DESCRIPTION OF PRODUCT OR USE OR SAMPLE OR MODEL SHALL CREATE ANY WARRANTY FROM R.P. ADAMS COMPANY, INC., UNLESS SIGNED BY THE PRESIDENT OF R.P. ADAMS COMPANY, INC.



Application Questionnaire

For your convenience, we list below some of the more common factors to take into account when selecting a strainer or filter.

Fluid to be strained _____ Flow rate in GPM _____

Working pressure in psi _____ Maximum pressure in psi _____

Working temperature _____ Maximum temperature _____

pH of fluid (Acid or Alkaline) _____

Strainer body material preferred _____

Strainer type: "Y" type; Basket; Duplex; Self-cleaning _____

Present pipeline size _____ Pipe material _____

Nature of solids to be strained out _____

Size of solids to be strained out _____ Size mesh required _____

Limitation on clearance in proposed strainer location: Above _____ Below _____

Maximum pressure drop that can be tolerated, with dirty screen _____ psid _____

Expected cleaning frequency: Daily; Weekly; Monthly; Other _____

OTHER ITEMS THAT MAY BE OF BENEFIT TO THE APPLICATION

Pressure gauges to show when clean-out is required _____

Isolating valves to facilitate strainer clean-out _____

Manual or automatic blow-down valve _____

Other comments _____

Most pump, nozzle, valve and instrument specifications will give maximum size of solids that can be passed. See screen mesh opening table on right to select appropriate screen. Screen opening should be approximately 1/3 to 1/2 the size of maximum allowable solids size.

Mesh	Inches*	Microns	Mesh	Inches*	Microns
16	0.045"	1150	60	0.010"	250
20	0.032"	800	80	0.008"	200
30	0.021"	500	100	0.005"	125
40	0.016"	400	200	0.003"	75

*use numbers after decimal point for strainer part number suffix

ALSO FROM R.P. ADAMS



PORO-EDGE™ AUTOMATIC SELF-CLEANING STRAINERS CONTINUOUSLY SUPPLY CLEAN LIQUID TO PROTECT PROCESS EQUIPMENT IN INDUSTRIAL AND MUNICIPAL APPLICATIONS.

The Poro-Edge Automatic Self-Cleaning Strainer meets a wide variety of applications by removing dirt and debris from water supplies, creating water acceptable for process services. Unlike other designs, the Poro-Edge media does not come in contact with the backwash mechanism, thereby fully protecting the elements from collapse or failure.

Poro-Edge comes with the industry best, two year warranty. And several sizes to handle flow capacities up to 85,000 GPM.



LIQUID FILTERS FOR FINE FILTRATION

The R.P. Adams IWF Filtration System consists of multiple element filters designed to remove fine particulate from liquid process streams. With a filter aid precoat, it will remove particulate to levels below 0.5 micron.



GP FILTER PROVIDES GUARANTEED PROTECTION FOR AIR, GAS AND STEAM SYSTEMS.

The GP filter has a two-step separation process that ensures maximum filtration. The filter uses a permanent filter element that will not break or collapse, even when plugged, to fully protect your process equipment. In addition, the element can be cleaned and re-used. Available in ASME Code design and 3A standards for culinary steam systems.



SUPERIOR REMOVABLE & FIXED BUNDLE HEAT EXCHANGERS & AFTERCOOLERS PROVIDE CONSISTENT PROCESS CONTROL FOR YOUR APPLICATION.

R.P. Adams offers a wide selection of removable bundle and fixed bundle heat exchangers and aftercoolers with and without cyclone separators to meet your heat exchanger needs. The removable tube bundle provides easy cleaning and maintenance while the fixed bundle offers significant cost savings.



REHEAT PACKAGED SYSTEMS ELIMINATE PLANT ENERGY COSTS AND MAINTENANCE PROBLEMS.

An R.P. Adams Reheat Dryer System works much like a refrigerated dryer, where it cools the air by lowering the dew point, removes the moisture from the stream and then reheats the air for use in your process. However, the Reheat Dryer System does not require electricity to operate, thereby saving on plant energy costs. In addition, there are no moving parts or sensitive controls, which makes this system virtually maintenance free. A Reheat Dryer System is so efficient that it can actually take the place of a refrigerated dryer.

PROUDLY REPRESENTED BY:



**R.P. ADAMS
COMPANY, INC.**

CALL TOLL FREE: 1-800-896-8869, TO LET R.P. ADAMS PROVIDE FILTRATION AND HEAT EXCHANGE SOLUTIONS THAT MEET YOUR NEEDS. OR VISIT OUR WEB SITE AT: www.rpadams.com

P.O. Box 963 • Buffalo, NY 14240-0963 • 716-877-2608 • Fax: 716-877-9385
Email: info@rpadams.com • Web: www.rpadams.com